

2024

CATALOGUE



www.zoseltreefarm.com



NEW INTRODUCTIONS



GUARDIAN® COLUMNAR ASPEN *Populus x 'Jefguard'*

Mature Size 40' x 10' (12 m x 3 m) Zone 2

A complex aspen poplar hybrid with a moderate level of bronze leaf disease resistance. A seedless tree, Guardian provides a fast-growing, vertical element to the prairie landscape. It represents the best replacement for Swedish Aspen.



LITTLE LIME PUNCH HYDRANGEA® PROVEN WINNER

Ht 3'-5' x 3'-5'

Zone 3a



You'll be drinking in the beauty Little Lime Punch® hydrangea serves up all season long. Similar to Little Lime®, its blooms emerge lime green, but they mature a little differently. Flowers change progressively from the bottom up in a gorgeous array of white, light pink, and rich Hawaiian Punch red! As it reblooms throughout the summer you'll see these four colors mix to create a truly memorable show. With a compact habit and strong stems, you'll find that it's as useful in the landscape as it is beautiful. Top reasons to grow Little Lime Punch® panicle hydrangea:- Fantastic color show - a mix of white, green, and pink all on one bloom!- Same useful, petite habit as Little Lime.- Impactful fall color.



PURPLE SPIRE® ROSYBLOOM CRABAPPLE *Malus x adstringens 'Jefspire'*

Mature Size: 20' x 6' (6 m x 2 m) Zone 3

Purple Spire is outstanding for its compact, columnar form and showy purple foliage in late summer. A few pink flowers in spring are followed by purple fruit.



ODYSSEY® APPLE *Malus x 'Jefsey'*

Parentage: Unknown Zone 3

Odyssey boasts a sweet flavour comparable to the 'Gala' apple. The fruit ripens in mid-September and stores well. Fruit size 7-8 cm.



FORT-LARAMIE

Mature Size: 15cm-6" Zone 3

An ever-bearing variety producing two heavy crops per year. First at the end of June followed by the second in September. An older variety with firm, bright scarlet-red berries.



NEVER ALONE ROSE

Mature Size: 60 cm tall x 90 cm wide Zone 3

A dwarf rose that displays a red bloom on the outer edges with a creamy white center. The Never Alone Foundation was formed to aid in the lives of individuals and families affected by cancer. Perfect rose for your patio.

TREE WRAPPING CHARGES

To avoid wind damage when transporting trees, we will wrap for you.

This wrapping charge only covers the materials and labor.

Small Tree **\$5.00** /tree

Medium Tree **\$8.00** /tree

Large Tree **\$12.00** /tree

TABLE OF CONTENTS

Tree Moving	2
Miscellaneous	2
Landscape Design	2
Landscaping Services.....	2
Guarantee	3
Prices.....	3
Gift Certificates	3
Perennials.....	3
Tree Seedlings.....	3
Evergreens.....	4-6
Shade Giving Trees	6-9
Ornamentals	9-10
Shrubs	11-16
Vines	16-17
Roses	17-19
Fruit Trees	19-20
Small Fruit	20-23

Zosel Tree Farm

Box 179, Pleasantdale, SK S0K 3H0

Phone: (306) 874-5729 Fax: (306) 874-5749

Email: zoseltreefarm@sasktel.net

Web: zoseltreefarm.com

We are located in the Pleasantdale District, off Hwy. 6, 2 miles East and 2.25 miles North on the Pleasantdale grid. Just follow the signs.

Hours of Operation:

Spring Hours — May 1 - June 30

Open Monday - Friday 8:30 a.m. - 7:00 p.m.; Saturday & Sunday 8:30 a.m. - 6:00 p.m.

Summer Hours — July 2 - August 31

Monday - Friday 8:30 a.m. - 5:30 p.m.; Saturday & Sunday Closed

Fall Hours — September 1 - October 15

Monday - Saturday 9:00 a.m. - 5:30 p.m.; Sunday Closed

WE ARE CLOSED FOR LUNCH from 12:00 - 12:30 p.m. You are welcome to look around.

*If alternate arrangements need to be made, call 1 day ahead to make arrangements:
Bryce at 306-874-7125*

WE ARE CLOSED FOR STATUTORY HOLIDAYS

TREE MOVING

Services

1 - 3 hours:	\$225.00/hour
Over 3 hours:	\$200.00/hour
Mileage per km:	\$2.50
Travel time:	\$25.00/hour per person

Volume Discounts:

Over \$100.00	3%
Over \$250.00	5%
Over \$500.00	10%

Pot Refunds

1 gallon:	\$.15
2 gallon:	\$.30
5 gallon:	\$.60

MISCELLANEOUS

Burlap

Untreated. Per sq. ft.:	\$.25
-------------------------	-------

Fertilizers

Water-soluble. 28-14-14 per pound:	\$7.50
Slow-release. 14-14-14 per pound:	\$7.50
Slow-release. 21-5-12 per pound:	\$7.50

Grass Seed (Spread 4lbs/1,000 sq. ft)

Creeping Fescue per pound:	\$5.75
Kentucky Bluegrass per pound:	\$5.75

Landscape Stone (Natural Stone Chunks 1.5"/cu. ft)

Natural Stone Chunks 1.5"/cu. ft:	\$2.20
Natural Pea Stone Chunks 3/8" for pathways/cu. ft:	\$2.20
Natural Screened 4" Down for dry creek-beds/cu. ft:	\$2.20

Lawn Edging

Black vinyl heavy grade - per ft:	\$2.45
-----------------------------------	--------

Prograde Fabric

Heavy grade - per sq. ft:	\$.45
---------------------------	-------

Plastic Mulch Weed Barrier

per sq. ft:	\$.30
per roll	\$350.00

Wood Mulch

Pine - per cu. ft:	\$3.25
Per Yard	\$62.50
2 Yard Short Box Half Ton	\$125.00
3 Yard Long Box Half Ton	\$187.00

LANDSCAPE DESIGN

Good landscape planning will develop into a beautiful, easy to maintain yard. Farmyard design should concentrate on back three outside rows around the yard then designate areas for garden, fruit trees and small recreational area with selections of shade trees and shrubbery around the house. In urban settings, planting can vary from cluster planting to planting around the edge in back, utilizing space while adding beauty and colour. We can help with suggestions or with a professional landscaping service. Please feel free to inquire about prices on farms, parks, urban or just a partial yard.

Landscape Design Service \$100.00/hour

LANDSCAPING SERVICES

We offer many services to make your landscaping requirements go as smoothly as possible.

- Pruning
- Tree Removal
- Tree Spade Services
- Landscape Design
 - Underground Sprinklers
 - Paved Driveways and Paths
 - Sod Installation
 - Edging and Fabric Laying
 - Retaining Walls
- Tree Installation
- Shrub Beds

We have 60 acres of field trees and 2 acres of containerized trees. We take pride in supplying our customers with the hardiest of plants for the prairies.

Visit our Garden Centre where we carry a large selection of Evergreens, Fruit Trees, Hardy Roses, Ornamental Shrubs, Perennials, Shade Trees and other landscape supplies.

GUARANTEE

As we understand that some plants have problems we offer warranty coverage for plants that have problems that originated in our care, such as not coming out of dormancy. This should be evident within 30 days from date of purchase. If plants are not growing please call us as we are here to help. We DO NOT warranty healthy plants leaving our care. Plant survival depends on how they are cared for to get established. Improper planting, lack of or too late watering as well as winter damage is out of our control. Plants that we do not cover are azaleas, clematis, hedging, perennials, seedlings, strawberries and tender roses.

PRICES

Prices subject to change due to constant rising costs.

GIFT CERTIFICATES

For special occasions, please feel free to inquire about our gift certificates which can be redeemed at your gardener's convenience.

PERENNIALS

Perennials can provide a total range of colour, fragrance and brilliance in large beds or used as accents. Borders along walks, around pools, patios or foundations can be designed to provide variety in height, foliage, colour and time of blooming. Perennial flowers die down each fall but come back the following spring, requiring little attention. For the best selection come by in early spring.

Perennials assorted

	3.5" pot ~ \$5.00
	4.5" pot ~ \$8.50
	1 gal. ~ \$15.00
Bleeding Hearts	1 gal. ~ \$15.00
Day Lily	1 gal. ~ \$15.00
Asiatic Lily	4.5" pot ~ \$8.50
	1 gal. ~ \$15.00
Iris	4.5" pot ~ \$8.50
Peonies	1 gal. ~ \$40.00
Fernleaf Peony, Specialty Peonies	1 gal. ~ \$75.00
Bartzella Yellow and Itoh Peonies	1 gal. ~ \$50.00
	2 gal. ~ \$75.00
Hosta	1 gal. ~ \$15.00
Grass	4.5" pot ~ \$8.50
	1 gal. ~ \$15.00
Native Fern	1 gal. ~ \$15.00

TREE SEEDLINGS

Bare Root or Plugs

1 yr	6" to 9"	@ \$3.50
2 yr	9" to 12"	@ \$5.75
3 yr	12" to 18"	@ \$7.50
	18" to 24"	@ \$10.00
	30"	@ \$12.50
	36"	@ \$15.00

Size & Selection may vary from year to year

Colorado Spruce	White Spruce
Lodge Pole Pine	Scots Pine
Black Ash	Green Ash
Little Leaf Linden	Amur Maple
Silver Maple	Acute Willow
Golden Willow	Silver Willow
Assiniboine Poplar	Northwest Poplar
Okanese Poplar	Sundancer Poplar

CALIPERS TREES

1 inch caliper	per tree	\$200.00
1 1/4 inch caliper	per tree	\$225.00
1 1/2 inch caliper	per tree	\$275.00
1 3/4 inch caliper	per tree	\$325.00
2 inch caliper	per tree	\$350.00
Landscape Design	per hour	\$100.00
Burlap (untreated per sq. ft.)		\$0.45
Tree Wraps		\$3.50

EVERGREENS - FIELD TREES

2-8' WB (Wire Basket)

Fir Sub-Alpine	\$42.00/ft
Fir Balsam	\$40.00/ft
Larch Siberian	\$40.00/ft
Pine Lodge Pole	\$40.00/ft
Pine Ponderosa	\$40.00/ft
Pine Scotch	\$40.00/ft
Pine Swiss Stone	\$46.00/ft
Pine Red	\$40.00/ft
Pine White	\$40.00/ft
Pine Mountain	3' WB \$85.00
Black Hill Spruce	\$40.00/ft
Spruce Colorado Blue	\$40.00/ft
Spruce Select Blue	\$46.00/ft
Spruce Meyer	\$40.00/ft
Spruce Norway	\$40.00/ft
Spruce White	\$40.00/ft
Spruce Dwarf Norway	\$40.00/ft

EVERGREENS

FIR SUB-ALPINE – *Abies lasiocarpa*

Beautiful narrow tree with light blue-green foliage highlighting dark purple-blue cones.
Ht 15m-50' Sp 5m-16' Z2

FIR BALSAM – *Abies balsamea*

A native flat needle fir that likes to grow in partial shade, fragrant and very nice looking.
Ht 15m-50' Sp 6.6m-20' Z2

FIR DWARF BALSAM – *Abies balsamea* 'Nana'

A dark green mounded shrub, used for rock gardens. Prefers moist, acidic soil, shade tolerant.
Ht 60cm-2' Sp .9m-3' Z2

FIR DOUGLAS – *Pseudotsuga Menziesii*

Foliage is blue-green, with needles 1' long. Pyramidal shape in youth becomes less defined with age.
Ht 15m-50' Sp 6m-20' Z3

LARCH SIBERIAN – *Larix sibirica*

Tall pyramidal conifer, needles shed in fall. Needles are light green turning golden yellow in fall.
Ht 18m-60' Sp 6m-20' Z2

PINE BRISTLECONE – *Pinus aristata*

A smaller growing pine with irregular growth. A long living tree with needles in fives.
Ht 4m-12' Sp 2m-6' Z2

PINE LODGEPOLE – *Pinus contorta latifolia*

Tall, narrow and straight-trunked. Needles are yellowish-green. For shelterbelts.
Ht 12m-40' Sp 3m-10' Z2

PINE PONDEROSA – *Pinus ponderosa*

A large growing pine with soft triple needles up to 10 inches long. Orange bark with bluish green needles.
Ht 12m-40' Sp 5.3m-16' Z2

PINE SCOTCH – *Pinus sylvestris*

A fast growing pine with rich bluish needles that grow in pairs 2" long. Red bark.
Ht 4m-12' Sp 9m-30' Z2

PINE SWISS STONE – *Pinus cembra*

A stately pine, densely columnar in youth becoming more open with age, likes moist, acidic, drained soil.
Ht 9m-30' Sp 5m-15' Z2

PINE RED – *Pinus resinosa*

Or Norway pine, has an upright oval form, with long straight trunk. They tolerate dry, acidic, sandy, conditions.
Ht 15m-50' Sp 6.6m-20' Z3

PINE WHITE – *Pinus strobus*

A graceful, specimen tree with dignified appearance, the soft textured needles are 5" long.
Ht 15m-50' Sp 6.6m-20' Z3

PINE MOUNTAIN – *Pinus Mugo Subsp. Uncinata*

This outstanding upright, narrow tree - like form of mugo pine has long, dark green needles and mature glossy brown cones.
Ht 4m-13' Sp 1.5m-5' Z2

PINE MUGHO – *Pinus mugo mughus*

This low growing evergreen has dense dark green needles. To keep compact shear tips in June.
Ht 3m-10' Sp 3m-10' Z2

PINE DWARF MUGHO – *Pinus mugo 'Pumilio'*

Attractive, dwarf shrubby growth habit. Dense dark green short needles.
Ht 150cm-5' Sp 150cm-5' Z2

PINE MUGO SLOW MOUND – *Pinus mugo Slowmond*

Attractive, low globe mounded mugo has tight dense green needles. Low maintenance. Ideal for rock gardens and small landscapes.
Ht 100cm-40" Sp 100cm-40" Z2

SPRUCE BLACK HILLS – *Picea glauca densata*

A more compact form of white spruce. Noted for its dark bluish green foliage and conical form.
Ht 9m-30' Sp 4.3m-13' Z2

SPRUCE COLORADO BLUE – *Picea pungens 'Glauca'*

Tall pyramid form. Color varies from green to blue, green or silvery blue. Fully Hardy.
Ht 15m-50' Sp 5.3m-16' Z2

SPRUCE SELECT BLUE – *Picea Pungens 'Select Blue'*

A narrow Colorado Blue Spruce with exceptionally bright silver blue needles. Premium Grade
Ht 33' Sp 8'



SPRUCE MEYER – *Picea meyeri*

Upright branching habit with dense blue-green needles. Native to China. Looks similar to Colorado spruce.
Ht 9m-30' Sp 5.3m-16' Z2

SPRUCE NORWAY – *Picea Abies*

The form is pyramidal while small and loosens with age. Needles are lighter green, growing angular.
Ht 15m-50' Sp 8.3m-25' Z2

SPRUCE WHITE – *Picea glauca*

A native tree that performs best in moist, well drained soil. The stiff four sided needles are dark green.
Ht 20m-60' Sp 5.3cm 16" Z1

SPRUCE BIRDS NEST – *Picea Abies*

A dwarf, flat topped spreading spruce with many tight horizontal layers. Needles are bright green.
Ht 100cm-40" Sp 100cm-40" Z2

SPRUCE DWARF NORWAY – *Picea abies pumila*

Dense, dwarf globe-shaped spruce with light green foliage. Resistant to winter burn.
Ht 125cm-4' Sp 125cm-4' Z3

SPRUCE LITTLE GEM – *Picea abies* ‘Little Gem’

Dwarf, slow-growing evergreen with dense rich green needles on a compact flat-topped head.

Ht 55cm-20” Sp 125cm-4’ Z2

SPRUCE OHLENDORFFI – *Picea abies* ‘Ohlendorffii’

Broad, conical evergreen with small, yellow-green needles, dark orange brown dormant winter buds.

Ht 150cm-5’ Sp 125cm-4’ Z3

SPRUCE GLOBE BLUE –***Picea pungens glauca***

Naturally dwarf, dense globular form, maintains shape without assistance. Bluish needles.

HT 125cm-4’ Sp 125cm-4’ Z3

SPECIALTY TREE**SPRUCE SESTER DWARF BLUE –*****Picea pungens* ‘Sester’**

Classic conical shape, show grower with beautiful bright silvery blue colour. Dwarf habit.

Ht 250cm-8’ Sp 150cm-5’ Z2

SPECIALTY TREE**SPRUCE BABY BLUE –*****Picea pungens* ‘Baby Blue’**

An intense blue-coloured pyramidal with a fuller more uniform growth habit. No shearing.

Ht 15m-50’ Sp 5.3m-16’ Z2

SPECIALTY TREE**PRUCE MONTGOMERY BLUE –*****Picea pungens glauca***

Dwarf rounded shape forms a upright leader. Dense bright blue needles.

Very slow growing.
Ht 4.3m-13’ Sp 150cm-5’ Z2

SPECIALTY TREE**SPRUCE COLUMNAR BLUE –*****Picea pungens* ‘Fastigiata’**

Perfectly upright columnar spruce, nice steel blue colour and intense powder blue on new growth.

Ht 6.6m-20’ Sp 175cm-6’ Z3

SPECIALTY TREE**BABY BLUE EYES****SPECIALTY TREE****JUNIPER MEDORA UPRIGHT -*****Juniperus scopulorum***

Slow growing, slender columnar upright, blue-green color, very hardy.

Ht 3m-10’ Sp 125cm-4’ Z2

JUNIPER MOONGLOW – *Juniperus scopulorum*

A upright pyramid with dense compact branching habit displays intense silver blue foliage.

Ht 3m-10’ Sp 150cm-5’ Z3

JUNIPER SKY ROCKET – *Juniperus scopulorum*

Narrowest, upright juniper with soft, blue-green foliage.

Ht 3m-10’ Sp 90cm-3’ Z3

JUNIPER WICHITA BLUE – *Juniperus scopulorum*

Broad pyramidal form, dense foliage stays bright blue all year round. Slow growing.

Ht 3m-10’ Sp 150cm-5’ Z2

JUNIPER ANDORRA – *Horizontalis* ‘youngstown’

Ground cover, grayish-green foliage, tips turn purple colour toward fall.

Ht 60cm-2’ Sp 150cm-5’ Z3

JUNIPER ARCADIA – *Juniperus sabina* ‘Arcadia’

Semi-spreading growth habit. Lacy foliage is grass-green. Attractive low growing.

Ht 60cm-2’ Sp 150cm-5’ Z2

JUNIPER BAR HARBOUR – *Juniperus horizontal*

Branches are wide spreading and hug the ground. Grey-blue foliage turns plum in fall.

Ht 15cm-6” Sp 150cm-5’ Z2

JUNIPER BLUE CHIP – *Juniperus horizontalis*

Compact ground cover. Fine steel-blue foliage retains color throughout year.

Ht 30cm-12” Sp 150cm-5’ Z3

JUNIPER BLUE DANUBE – *Juniperus horizontalis*

Semi-upright form, spreading branches. Heavy gray-blue foliage.

Ht 125cm-4’ Sp 175cm-6’ Z3

JUNIPER BLUE PRINCE – *Juniperus horizontalis*

Dense, slow growing ground cover with blue foliage. Great for cascading.

Ht 30cm-12” Sp 90cm-3’ Z2

JUNIPER BLUE RUG –***Juniperus horizontalis* ‘Wiltoni’**

One of the best low spreading junipers of dense habit and intense silver-blue foliage.

Ht 10cm-4’ Sp 150cm-5’ Z3

JUNIPER BROADMOOR – *Juniperus sabina*

Dense mounding form of bright green foliage. Full sun to partial shade.

Very Hardy.
Ht 30cm-12” Sp 150cm-5’ Z2

JUNIPER BUFFALO – *Juniperus sabina*

Attractive bright green feathery foliage, with a dense spreading form.

Cascades over walls.
Ht 30cm-12” Sp 150cm-5’ Z2

JUNIPER CALGARY CARPET – *Juniperus Sabina*

Distinct selection of Arcadia with lower spreading branches and soft green foliage.

Ht 30cm-12” Sp 150cm-5’ Z3

JUNIPER HUGHES – *Juniperus Horizontalis*

Glowing silver-blue foliage on a low-growing, wide-spreading graceful form.

Ht 30cm-12” Sp 150cm-5’ Z2

JUNIPER ICEE BLUE – *Juniperus horizontalis*

Improvement over Blue Rug with low, trailing carpet of intense silver-blue foliage.

Ht 15cm-6" Sp 150cm-5' Z3 ✨

JUNIPER PRINCE OF WALES –***Juniperus horizontalis***

Low spreading branches that hug the ground. Has a dense bright green carpet appearance.

Ht 15cm-6" Sp 150cm-5' Z2 ✨

Fir / Pine / Spruce / Junipers PRICING

1 gallon \$22.25 3 gallon \$41.50

2 gallon \$42.50 5 gallon \$80.50

Specialty Spruce

PRICING

1 gallon \$35.00 3 gallon \$105.25

2 gallon \$62.75 5 gallon \$165.00

10 gallon \$225.50

CEDARS

CEDAR BRANDON – *Thuja occidentalis* ‘Brandon’

Pyramidal, compact slender form. Excellent formal tree.

Very hardy

Ht 5.3m-16' Sp 125cm-4' Z3 ✨

CEDAR HOLMSTRUP –***Thuja occidentalis* ‘Holmstrupii’**

A smaller cedar having a sturdy densely branched conical form. Lacy foliage.

HT 175CM-6' Sp 60cm-2' Z2 ✨ ✨

CEDAR SKYBOUND – *Thuja occidentalis* ‘Skybound’

Foliage is a darker green than the Brandon with much improved hardiness.

Ht 5.3m-16' Sp 125cm-4' Z2 ✨ ✨

CEDAR WARES SIBERIAN –***Thuja occidentalis* ‘Wareana’**

A very hardy cedar that can stand most extreme climates. A broad dark green pyramid.

Ht 3m-10' Sp 175cm-6' Z2 ✨ ✨

CEDAR DANICA – *Thuja occidentalis* ‘Danica’

Dense compact natural globe form, very neat. Has dark green foliage.

Ht 75cm-30" Sp 75cm-30" Z3 ✨ ✨

CEDAR HETZ MIDGET –***Thuja occidentalis* ‘Hetz Midget’**

Extremely slow growing, dwarf cedar of globular habit with dark green foliage.

Ht 75cm-30" Sp 100cm-40" Z3 ✨ ✨

CEDAR LITTLE GIANT –***Thuja occidentalis* ‘Little Giant’**

A slow growing dwarf compact globe, needs no trimming. Fine dense green foliage.

Ht 100cm-40" Sp 100cm-40" Z2 ✨ ✨

CEDAR WOODWARDII GLOBE –***Thuja occidentalis* ‘Woodwardii’**

A fast, round growing globe cedar with open mid-green foliage. Very hardy.

Ht 150cm-5' Sp 150cm-5' Z2 ✨ ✨

Cedar PRICING

1 gallon \$22.25 3 feet \$56.00

2 feet \$38.00 4 feet \$68.00

5 feet \$99.50

SHADE GIVING TREES

LARGER SIZES AVAILABLE IN POTS & FIELD - INQUIRE ABOUT PRICING

ASH BLACK – *Fraxinus*

A fast growing tree having a narrow pyramidal shape and good fall colour. Grows best in cool moist areas.

Ht 15m-50' Sp 6m-20' Z2 ✨

ASH FALL GOLD – *Fraxinus nigra* ‘Fallgold’

A seedless straight growing compact shade tree with exceptional fall colour.

Ht 15m-50' Sp 6m-20' Z2 ✨

ASH GREEN – *Fraxinus pennsylvanica*

Excellent for boulevard and shade purposes. Very hardy and drought resistant.

Ht 15m- 50' Sp 6m- 20' Z2 ✨

ASH MANCHURIAN –***Fraxinus mandshurica* ‘Mancana’**

An exotic looking specimen. A male seedless selection. Has a dense oval form, with yellow fall colour.

Very Hardy.

Ht 15m – 50' Sp 6m-20' Z2 ✨

ASH NOBILITY WHITE –***Fraxinus Americana* ‘Jefwis’**

Nobility has an upright oval shaped branching habit.

The green foliage turns a deep purple in early fall.

Ht 15m – 50' Sp 9m-30' Z2 ✨

ASH NORTHERN GEM – *Fraxinus x 'Northern Gem'*

A cross between a Black Ash and a Manchurian Ash.

It has a globe shaped crown and prairie hardy.

Ht 12m- 40' Sp 6m-20' Z2 ☀

ASH NORTHERN TREASURE –***Fraxinus x 'Northern Treasure'***

Parentage similar to Northern Gem but the crown is more upright and oval shaped.

Ht 12m-40' Sp 6m-20' Z2 ☀

ASH PATMORE – *Fraxinus pennsylvanica 'Patmore'*

A seedless variety with shiny olive green leaves. Fast growing, retains leaves longer.

Ht 12m-40' Sp 7m-23' Z3 ☀

ASH PRAIRIE SPIRE –***Fraxinus pennsylvanica 'Rugby'***

A narrow, upright selection. The green foliage turns bright golden yellow in fall. Seedless.

Ht 15m-50' Sp 6m-20' Z3 ☀

BIRCH CLUMP – *Betula papyrifera*

A clump Birch has 3-5 stems.

Bark turns white in about 3 years.

Good fall colour.

Ht 12m-40' Sp 6m-20' Z2 ☀

BIRCH CUTLEAF WEEPING –***Betula pendula laciniata***

Fine specimen tree. Weeping habit, long trailing branches. White bark, leaves deeply cut and lacy.

Ht 12m-40' Sp 7m- 23' Z3 ☀

BIRCH DAKOTA PINNACLE –***Betula platyphylla 'Fargo'***

Columnar selection of Asian White Birch with dense foliage & white bark.

Yellow fall colour.

Ht 10m-30' Sp 3m-8' Z3 ☀

**BIRCH CRIMSON FROST – *Betula 'Crimson Frost'***

A hybrid, purple leaf selection, the exfoliating bark turns white with a cinnamon hue.

Ht 8m-26' Sp 6m-20' Z3 ☀

BIRCH WHITE PAPER – *Betula papyrifera*

A fast growing upright tree, useful for shade or accent. Stems turn paper white.

Ht 12m-40' Sp 6m 20' Z2 ☀

BIRCH YOUNG'S WEEPING – *pendula 'Youngi'*

Branches have more of a weeping habit than Cutleaf Weeping Birch.

Ht 5m-15' Sp 4m-13' Z3 ☀

CARAGANA SUTHERLAND –***Caragana arborescens 'Sutherland'***

This Caragana is upright and slender, growing less than 1 meter wide. Non-suckering.

Ht 6m -20' Sp 3m-10' Z2 ☀

DELTA HACKBERRY – *Celtic occidentalis*

A rare, native species, has a form similar to American Elm. Bark is corky and rough.

Ht 15m-50' Sp 12m-40' Z2 ☀☀

ELM BRANDON –***Ulmus americana 'Brandon'***

A compact form of American Elm.

Fast growing, upright, vase-shaped tree.

Ht 15m-50' Sp 12m-40' Z2 ☀

ELM DISCOVERY –***Ulmus davidiana Japonica***

A compact version of the American Elm which is highly resistant to Dutch Elm disease.

Ht 10m-30' Sp 10m-30' Z3 ☀

LINDEN AMERICAN – *Tilia americana 'American'*

Excellent shade tree. Large heart shaped leaves & fragrant flowers in July.

Ht 15m- 50' Sp 12m-40' Z2 ☀☀

LINDEN DROPMORE – *Tilia x flavescens 'Dropmore'*

A cross between Little Leaf and American Linden. Good shade tree with wide pyramidal form.

Ht 15m-50' Sp 10m-30' Z3 ☀

LINDEN GREENSPIRE – *Tilia cordata 'Greenspire'*

A neat, compact linden, widely used for boulevard planting.

Ht 12m-40' Sp 7m-23' Z3 ☀

LINDEN LITTLE LEAF – *Tilia cordata*

Dense, glossy foliage, white to yellow flowers, shiny, copper bark. Fast growing.

Ht 12m-40' SP 10m-30' Z3 ☀

LINDEN NORLIN – *Tilia cordata 'Ronald'*

A hardy hybrid of Little Leaf Linden. Resistance to leaf spot, leaf gall and improvement over sun-scald.

Ht 15m-50' Sp 10m-30' Z3 ☀

LINDEN TRUE NORTH – *Tilia americana 'Duros'*

A pyramidal upright growing habit. Bark is white when young. Yellow fall colour.

Ht 15m-50' SP 8m-26' Z2 ☀

MAPLE AMUR – *Acer ginnala*

Low headed tree or spreading shrub. Outstanding brilliant scarlet foliage in fall. Very hardy.

Ht 5m-15' Sp 4m-13' Z2 ☀

MAPLE AMUR TREE FORM – *Acer ginnala*

A small, low-branched tree noted for its red fall colour. Compact rounded form.

Ht 6m-20' Sp 5m-15' Z2 ☀

MAPLE FLAME AMUR – *Acer ginnala 'Flame'*

Small dense form. Uniform variety providing fiery fall colour. Tree form.

Ht 5m-15' Sp 5m-15' Z2 ☀☀

MAPLE MANITOBA – *Acer negundo*

Rounded, high headed tree with brilliant scarlet fall colour.

Ht 15m-50' Sp 10m-30' Z2 ☀

MAPLE BARON – *Acer negundo* 'Baron'

Extremely hardy male selection (seedless), rounded top with green foliage that turns yellow in fall.

Ht 10m-30' Sp 12m-40' Z2 ☀

MAPLE SENSATION MANITOBA –***Acer negundo* 'Sensation'**

A hardy selection of Manitoba Maple with a reddish leaf, great red fall colour & more uniform habit.

Ht 12m-40' Sp 11m-33' Z2 ☀

MAPLE AUTUMN SPIRE –***Acer rubrum* 'Autumn Spire'**

Male selection. Outstanding red fall colour & cold hardy. Prefers acidic soil.

Ht 15m-50' Sp 8m-25' Z3 ☀

MAPLE INFERNO SUGAR – *Acer saccharum* 'Inferno'

An upright round shaped Sugar Maple, which comes from a northern source of Sugar Maple. Vibrant orange-yellow fall colour.

Ht 12m-40' Sp 9m-30' Z3 ☀

MAPLE SILVER CLOUD –***Acer saccharum* 'Silver Cloud'**

A hardier selection of silver Maple. A fast grower with upright oval habit. Yellow fall colour.

Ht 12m-40' Sp 8m-26' Z3 ☀

MAPLE SILVER KENORA –***Acer saccharinum* 'Silver Kenora'**

Green foliage has silver undersides throughout the season which turns yellow in fall. Fast growing. Very hardy maple.

Ht 18m-60' Sp 15m-50' Z2 ☀

SPECIALTY TREE**MAPLE UNITY SUGAR – *Acer saccharinum* 'Jefcan'**

Unity has an upright, rounded crown shape with a yellow-orange fall colour. Prefers rich, well drained soil and sheltered location.

Ht 12m-40' Sp 9m-30' Z3 ☀

SHADE GIVING TREES PRICING

Ash / Birch / Elm / Maple / Linden

Flowering Crabapple / Caragana / Hackberry

2 feet - \$42.00 5 feet - \$86.75 1½" Cal - \$275.00

3 feet - \$66.25 6 feet - \$97.00 1¾" Cal - \$325.00

4 feet - \$76.50 2" Cal - \$350.00

SPECIALTY SHADE TREES PRICING

Parkland / Pillar / Birch

Maple / Silver / Kenora

3 feet - \$74.75 5 feet - \$95.25 1½" Cal - \$295.00

4 feet - \$85.00 6 feet - \$105.50 1¾" Cal - \$350.00

2" Cal - \$375.00

Caliper Trees are measured at stem 6" off ground level.

OAK BURR – *Quercus macrocarpa*

A hardy slow growing tree that has deeply furrowed, black bark with age. Large, deeply lobed leaves.

Ht 15m-50' Sp 10m-30' Z2 ☀

GUARDIAN® COLUMNAR ASPEN

A complex Aspen Poplar hybrid with a moderate level of bronze leaf disease resistance. A seedless tree, Guardian provides a fast-growing, vertical element to the prairie landscape. It represents the best replacement for Swedish Aspen.

Ht 12m-40' Sp 3m-10' Z3 ☀

SPECIALTY TREE**POPULAR ASSINIBOINE – *Populus x 'Assiniboine'***

This male clone has a narrow crown and is hardy and fast growing. Free of gallmite and canker.

Ht 18m-60' Sp 8m-25' Z2 ☀

POPULAR NORTHWEST – *Populus x jaeckii* 'Northwest'

Broad oval shape, large leaves. Golden fall colour, fast growing, thrives in cold dry areas.

Ht 15m-50' Sp 12m-40' Z2 ☀

POPULAR OKANESE – *Populus x 'Okanesse'*

A fast growing tree, with dense, dark green foliage. Seedless.

Ht 18m-60' Sp 8m-25' Z2 ☀

POPULAR PRAIRIE SKY –***Populus x canadensis* 'Prairie Sky'**

Tall, narrow poplar. Highly resistant to leaf rust and canker. Green & white foliage. Fast grower.

Ht 24m-80' Sp 4m-12' Z3 ☀

POPULAR SUNDANCE – *Populus x ACWS151*

Sundance is a narrow form of a hybrid poplar. Selected for resistance to bronze leaf disease.

Ht 12m-40' Sp 3m-10' Z2 ☀

POPULAR SWEDISH ASPEN –***Populus tremula* 'Erecta'**

A fast growing, hardy narrow tree that grows 1 meter wide. Dark green leaves turn red in fall.

Ht 10m-35' Sp 1.5m-4' Z2 ☀

SPECIALTY TREE**POPULAR TOWER –*****Populus x canescens* 'Tower'**

Neat columnar form, seedless, disease resistance, fast growing, dark green leaves, prairie hardy.

Ht 12m-40' Sp 2m-6' Z3 ☀

SPECIALTY TREE**POPULAR TREMBLING ASPEN – *Populus tremuloides***

Native tree noted for white bark and green foliage which quivers in the breeze. Golden fall colour.

Ht 15m-50' Sp 9m-30' Z1 ☀

WALNUT BLACK – *Juglans nigra*

Large attractive shade tree noted for its nuts and valuable wood. Prefers rich soil.

Ht 14m-45' Sp 10m-30' Z3 ☀

WILLOW ACUTE - *Salix acutifolia*

A fast growing willow that does not drop its branches as easily as other willows. Excellent for shelter-belts. Green foliage with reddish-brown stems.

Ht 18m-60' Sp 10m-30' Z2

WILLOW GOLDEN - *Salix alba 'Vitellina'*

Good wind break tree with rapid growth. Attractive golden bark is very showy in winter.

Ht 18m-60' Sp 10m-30' Z2 ✱ ☀

WILLOW LAUREL Leaf - *Salix pentandra*

Wide, low headed form, attractive dark glossy foliage. Hardy. Good windbreak.

Ht 18m-60' Sp 10m-30' Z2 ✱ ☀

WILLOW SILKY WHITE - *Salix alba 'Sericea'*

A fast growing finely branched tree. Silvery foliage, reddish-brown stems. Hardy.

Ht 18m-60' Sp 10m-30' Z2 ✱ ☀

SHADE GIVING TREES PRICING Oak / Poplar / Walnut / Willow

1 gal - \$22.25 2 gal - \$42.50 5 gal - \$60.50

SPECIALTY POPLARS PRICING

1 gal - \$22.25 2 gal - \$49.25 5 gal - \$92.00
10 gal - \$126.50

ORNAMENTALS

CHERRY AMUR - *Prunus maackii*

Golden or bronze colored bark. White flowers followed by black fruit. Hardy, fast growing.

Ht 10m-30' Sp 6m-20' Z2 ☀

CHERRY MAYDAY TREE - *Prunus padus commutata*

Upright-spreading, fragrant white flowers in spring, small chokecherry-like fruit.

Ht 10m-30' Sp 6m-20' Z2 ☀

CHERRY MING CHERRY -

Upright oval growth. Racemes of white flowers in spring. Yellow fall color. Reddish copper bronze bark.

Ht 25' Sp 16' Z2b ✱ ☀

CHERRY SWEATHEART MAYDAY -***Prunus padus 'colorata'***

Upright, uniform Mayday with clusters of true pink blooms in spring & red purple foliage.

Ht 6m-18' Sp 3m-10' Z3b ☀

CHOKECHERRY ATALASTA'S SCHUBERT -***Prunus virginiana 'Atalasta'***

Green leaves turn purple in summer. Less prone to Black Knot. Budded on non-suckering roots.

Ht 8m-25' Sp 6m-20' Z2 ☀

CHOKECHERRY BAILEY'S SHUBERT -***Prunus virginiana 'Bailey Select'***

Vigorous oval-shaped tree with straight grey trunk. Foliage emerges green, matures to purple giving a two-tone effect early in the summer. Large white flowers followed by small black fruit that attracts birds.

Ht 6m-20' Sp 6m-18' Z2 ☀

CHOKECHERRY MIDNIGHT SHUBERT -***Prunus virginiana 'Midnight'***

Fast growing, broader headed, slightly larger foliage than Bailey's Select. Non-suckering.

Ht 8m-26' Sp 5m-16' Z2 ☀

CHOKECHERRY ROBERT -***Prunus virginiana 'Robert'***

A beautiful red-leaved Chokecherry that produces extra long racemes of grape sized fruit, Black Knot resistant.

Ht 2' Z2 ☀

COLUMNAR FL CRAB - *Greenwall*

This columnar crab has outstanding glossy green foliage, white spring flowers.

Ht 6m-20' Sp 2m-6' Z2 ☀

SPECIALTY TREE

CRAB FL DOLGO - *Malus x 'Dolgo'*

Attractive ornamental with white blossoms, small crimson red fruit makes excellent jelly.

Ht 10m-30' Sp 6m-20' Z2 ☀

CRAB FL GLADIATOR - *Malus x adstringens 'Durleo'*

An attractive rosy bloom with glossy purple leaves, pink flowers, and small purple fruit. Upright form.

Ht 6m-20' Sp 5m-15' Z2 ☀

CRAB FL KELSEY - *Malus x adstringens 'Kelsey'*

The only hardy double flowering crab. Outstanding pink blossoms, purple fruit.

Ht 6m-20' Sp 5m-15' Z2 ☀

CRAB FL MIDNIGHT SPIRE -***Malus x Jefeite***

Midnight Spires newest columnar crab, featuring glossy purple foliage. Pink spring flowers.

Ht 6m-20' Sp 2m-6' Z2 ☀

SPECIALTY TREE

CRAB FL PINK SPIRES

Pyramidal accent tree, bright pink blooms, coppery bronze tipped dark green foilage.

Ht 12'x20' Z2 ☀

SPECIALTY TREE

CRAB FL PURPLE SPIRE -***Malus x adstringens 'Jefespire'***

Purple Spire is outstanding for its compact, columnar form and showy purple foliage.

Ht 5m-15' Sp 2m-6' Z3 ☀

SPECIALTY TREE

CRAB FL RADIANT - *Malus 'Radiant'*

Deep pink blossom, small red fruit. Foliage red-purple at first, ages to green. Very hardy.

Ht 5m-16' Sp 5m-16' Z3 ☀

CRAB FL RED SPLENDOR – *Malus 'Red Splendor'*
 Rose-pink blossoms, small bright red fruit does not drop.
 Foliage glossy green, reddish tinge.
 Ht 6m-20' Sp 6m-20' Z3 *

CRAB FL ROYALTY – *Malus 'Royalty'*
 Reddish-purple foliage which turns orange in fall.
 Blossoms & fruit are dark red. Very hardy.
 Ht 5m-16' Sp 5m-16' Z3 *

CRAB FL SELKIRK – *Malus x adstringens 'Selkirk'*
 A hardy pink flowering crab with shiny red fruit. Fast
 growing tree with greenish leaves.
 Ht 8m-25' Sp 8m-25' Z2 *

CRAB FL SPRING SNOW – *Malus x 'Spring Snow'*
 Bright shiny green foliage, with clear white blooms in
 spring. Sterile selection.
 Ht 8m-25' Sp 5m-15' Z3 *

**CRAB FL THUNDERCHILD –
*Malus x adstringens 'Thunderchild'***
 Compact growing, deep purple leaves with pink blooms,
 dark red fruit. Very blight resistant.
 Ht 6m-20' Sp 5m-15' Z2 *

**CRAB WEeping ROYAL BEAUTY –
*Malus x adstringens 'Royal Beauty'***
 A small weeping form with coppery red
 foliage. Pink blooms in early May.
 Ht 3m-9' Sp 3m-9' Z3 *



**HAWTHORN SNOWBIRD –
*Crataegus x, mordanensis 'Snowbird'***
 Improved cold hardiness. This double white flowering
 tree has a oval shape with spare fruit.
 Ht 5m-15' Sp 5m-15' Z3 *

**LILAC GOLDEN ECLIPSE TREE –
*Syringa reticulata 'Golden Eclipse'***
 Golden-yellow and green variegated foliage
 combined with creamy-white, fragrant flowers that
 bloom in late June.
 Ht 6m-20' Sp 5m-15' Z3 *

**LILAC IVORY SILK TREE –
*Syringa reticulata 'Ivory Silk'***
 A spectacular tree when blooming in late June. Large
 creamy white fragrant flowers.
 Ht 6m-20' Sp 5m-15' Z3 *

**MOUNTAIN ASH AMERICAN –
*Sorbus americana***
 This tree has large fragrant white flowers with
 bright red berries.
 Ht 6m-20' Sp 5m-16' Z2 *

MOUNTAIN ASH EUROPEAN – *Sorbus aucuparia*
 Showy white flowers in May. Orange-red berries in
 August. Full sun.
 Ht 7m-23' Sp 5m-16' Z3 *

**MOUNTAIN ASH OAKLEAF –
*Sorbus thuringiaca 'Fastigiata'***
 Very uniform with orange or red fruit. Firelight resistant.
 Leaves lobed like English Oak.
 Ht 8m-25' Sp 6m-20' Z3 *

**MOUNTAIN ASH PYRAMICAL –
*Sorbus aucuparia 'Fastigiata'***
 Slow growing with dwarf columnar habit. Produces
 scarlet fruit that last throughout winter.
 Ht 6m-20' Sp 2m-6' Z3 *

**MOUNTAIN ASH RUSSIAN –
*Sorbus aucuparia 'Rossica'***
 Clusters of showy white flowers followed by large orange-
 red berries. Orange fall colour.
 Ht 8m- 26' Sp 5m-16' Z3 *

MOUNTAIN ASH SHOWY – *Sorbus decora*
 Very hardy but slower growing. Berries are a showy
 bright red. Good resistance to fireblight.
 Ht 6m-20' Sp 5m-16' Z2 *

**BUCKEYE AUTUMN SPLENDOR –
*Aesculus x 'Autumn Splendor'***
 Hybrid buckeye with an oval to round crown. Scorch
 resistant foliage turns maroon-red in the fall. Yellow-red
 flowers give rise to prickly nuts.
 Ht 11m-35' Sp 8m-25' Z3 *

BUCKEYE OHIO – *Aesculus glabra*
 Long lived, slow-growing tree with globe-shaped head.
 The glossy green lobed summer foliage turns brilliant
 yellow in the fall. Quite rare colour.
 Ht 12m-40' Sp 8m-25' Z3 *

OLIVE RUSSIAN – *Elaeagnus angustifolia*
 Fast growing tree with silvery foliage. Excellent for
 contrast. Tolerates alkaline soil.
 Ht 6m-20' Sp 5m-16' Z2 *

PLUM MUCKLE – *Prunus x nigrella*
 This hybrid to Native Plum and Russian Almond has
 bright pink blooms in spring. Non-suckering.
 Ht 4m-12' Sp 3m-10' Z2 *

ORNAMENTAL PRICING

2 feet - \$42.00 5 feet - \$86.75 8 feet - \$185.00
 3 feet - \$66.25 6 feet - \$97.00
 4 feet - \$76.50 7 feet - \$135.00

SPECIALTY ORNAMENTAL PRICING

4 feet - \$104.25 6 feet - \$144.75 8 feet - \$225.00
 5 feet - \$124.50 7 feet - \$185.00

SHRUBS

BARBERRY CHERRY BOMB -

Berberis thunbergi 'Monomb'

Wonderful thorny shrub with deep crimson-red foliage on compact rounded stems. Bright red berries in fall and winter. Foliage is best when planted in full sun. Excellent for border, or foundation planting.

Ht 1m-3' Sp 1m-3' Z4 *

BARBERRY CONCORDE -

Berberis thunbergi 'Concorde'

A dwarf globe-shaped barberry with deep purple, velvety foliage. New growth is red giving the shrub an interesting accent. Fruit is red and sparse.

Ht 60cm-2' Sp 1m-3' Z4 *

BARBERRY EMERALD CAROUSEL -

Berberis thunbergi 'Tara'

Rounded shrub with arching stems and lustrous rich green foliage. Small bright yellow flowers bloom along stems in spring. Foliage turns an outstanding red to reddish-purple in fall. Thorny, good for hedging.

Ht 1.5m-5' Sp 1.5m-5' Z4 *

BARBERRY GOLDEN NUGGET -

Berberis thunbergi 'Monlers'

A small showy new golden barberry with striking golden yellow foliage with a slight orange tint. Nice dwarf compact form.

Ht 30cm-12" Sp 50cm-18" Z4 *

BARBERRY ROSE GLOW -

Berberis thunbergi 'Rose Glow'

Handsome rounded shrub with deep purple foliage on arching branches. New foliage is rosy pink, variegated with creamy-white then darkens to deep red. Excellent thorny shrub for foundation, borders or hedging.

Ht 1.2m-4' Sp 1m-3' Z4 *

BARBERRY ROYAL BURGUNDY -

Berberis thunbergi 'Gentry'

An excellent shrub with deep burgundy-red foliage on arching stems. Colour becomes richer and darker in fall. Nice low-mounding form.

Ht 60cm-24" Sp 1m 3' Z4 *

BARBERRY RUBY CAROUSEL -

Berberis thunbergi 'Bailone'

Small rounded thorny shrub with deep purple-red foliage throughout the season. Upright arching habit.

Ht 1.25m-4' Sp 1m-3' Z4 *

BARBERRY SUNSATON -

Berberis thunbergi 'Monry'

Lovely new golden barberry with bright golden-yellow foliage with a slight orange tinge. Nice dwarf compact form. Best colour in full sun.

Ht 1m-3' Sp 1m-3' Z4 *

BOG ROSEMARY BLUE ICE -

Andromeda polifolia 'Blue Ice'

This evergreen ground cover has blue-gray foliage with pink white flowers in spring.

Thrives in slightly acidic and moist, well drained soil.
Ht 30cm-12" Sp 60cm-2' Z3 *

BURNING BUSH - *Euonymus nana Turkestanica*

Long narrow leaves, dark bluish-green turning pinkish in fall. Upright form.

Ht 90cm-3' Sp 90cm-3' Z3 *

BURNING BUSH Dwarf Winged -

Euonymus alatus 'Compactus'

This compact form of Winged Euonymus has square corky branches, red fruit and foliage turns red in fall.

Ht 90cm-3' Sp 90cm-3' Z3 *

CARAGANA COMMON - *Caragana arborescens*

An ideal shelter-belt or hedging plant for dry conditions. Bright yellow flowers in May. This plant fixes nitrogen so it can adapt to a variety of soils.

Ht 5m-15' Sp 2.5m-8' Z1 *

CARAGANA FERNLEAF - *Caragana lorbergi*

Branches have feathery appearance.

Hardy and drought tolerant.

Yellow flowers in late June.

Ht 3m-10' Sp 175cm-6' Z2 *

CARAGANA GLOBE - *Caragana frutex globosa*

Dense globular form, dark green foliage.

Good for hedging or foundation in sunny dry location.

Ht 90cm-3' Sp 90cm-3' Z2 *

CARAGANA PYGMY - *Caragana pygmaea*

Compact ball-shaped mound, yellowish-green fern-like foliage. Yellow flowers. Likes sunny dry location.

Ht 90cm-3' Sp 125cm-4' Z2 *

CARAGANA WEeping TOPGRAFT -

Caragana arborescens 'Pendula'

The arching and weeping branches of this regular leaved Caragana make it an ideal accent plant.

Top-grafted on a common caragana standard.

Ht 1.25m-4' Sp .9m-3' Z2 *

SPECIALTY TREE

CARAGANA WEeping WALKLER

TOPGRAFT -

Caragana arborescens 'Walker'

Fine textured, light green foliage makes this plant look very graceful and elegant. Top grafted on a common caragana standard.

Ht 1.25m-4' Sp .9m-3' Z2 *

SPECIALTY TREE

COTONEASTER PEKING - *Acutifolia*

Excellent for foundation or hedging.

Glossy green leaves, black berries and beautiful fall color.

Ht 2.5m-8' Sp 150cm-5' Z2 *

CRANBERRY COMPACT AMERICAM –
Viburnum tillobum 'Compactum'

Compact, neatly rounded form and shade tolerant plant. Foliage turns deep red in fall.
Ht 125cm-4' Sp 125cm-4' Z2

CRANBERRY Highbush – *Viburnum trilobum*

A hardy, free-flowering native shrub with edible red fruit. Foliage turns reddish-purple in fall.
Ht 3m-10' Sp 175cm-6' Z2

CRANBERRY DWARF EUROPEAN –
Viburnum opulus 'Nanum'

Dense mounded shrub with attractive foliage. Tolerates most soils except undrained wet area.
Ht 60cm-2' Sp 60cm-2' Z3

CURRENT ALPINE – *Ribes alpinum*

Dense, compact shrub with dark green foliage is easily maintained; good for hedging. Sun/shade.
Ht 150cm-5' Sp 90cm-3' Z2

CURRENT GOLDEN FLOWERING – *Ribes aureum*

Self-pollinating. Fragrant, yellow, spring blooms mature to edible blackberries. Green, lobed foliage turns scarlet in fall. Used in hedging and erosion control. Prefers evenly moist, well-drained soil but tolerates drought or seasonal flooding and poor or clay soils.
Ht 150cm-5' Sp 150cm-5' Z2

DOGWOOD BUDS YELLOW –
Cornus sericea 'Bud's Yellow'

Medium green foliage, with yellow stems. Appears resistant to die back or canker.
Ht 2.5m-8' Sp 2.5m-8' Z3

DOGWOOD CREAM CRACKER –
Cornus alba 'Cream cracker'

Dwarf, rounded shrub. Leaves are green with creamy coloured margins on the older growth. New growth is green with golden-yellow margins.
Ht 2m-6' Sp 1.5m-5' Z3

DOGWOOD GOLDEN VARIEGATED –
Cornus alba 'Gouchaulti'

Foliage is light green variegated with golden yellow. Stems are dark red.
Ht 150cm-5' Sp 150cm-5' Z3

DOGWOOD LITTLE REBEL – *Cornus alba 'Jefreb'*

A new introduction for 2013. This dwarf dogwood has crisp green foliage with bright red branches.
Ht 125cm-3'-4' Sp 125cm-3'-4' Z3

DOGWOOD KELSEY'S DWARF –
Cornus sericea 'Kelsey'

Compact, dense, slow-growing with shiny green leaves and reddish bark. White blooms in spring turn to white blue berries. Best for massed planting or low hedges.
Ht 50cm -20" Sp 50cm-20" Z4

DOGWOOD IVORY HALO –
Cornus alba 'Bailhalo'

A nice compact form of Silver Dogwood. Red stems, and white flowers. Good for small areas.
Ht 150cm-5' Sp 150cm-5' Z3

DOGWOOD PRAIRIE FIRE –
Cornus alba 'Prairie Fire'

This vigorous growing shrub has golden yellow foliage with flat white flowers in May.
Ht 2m-6.5' Sp 1.5m-5' Z3

DOGWOOD RED OSIER – *Cornus sericea*

This native dogwood is very attractive when the leaves turn red in the fall. White berries are enjoyed by songbirds. Prefers moist habitats.
Ht 3m-10' Sp 3m-10' Z2

DOGWOOD SIBERIAN RED – *Cornus alba sibirica*

White flowers in June, followed by clusters of blue fruit. Bright red bark. Sun or Shade.
Ht 2.5m -8' Sp 2m -6.5' Z2

DOGWOOD SILVER CHARM –
Cornus alba 'Silver Charm'

A finely branched, compact, rounded shrub that may be easily trimmed to desired size. Leaves show excellent white variegation throughout the season.
Ht 125cm-4' Sp 90cm-3' Z2

DOGWOOD SILVER VARIEGATED –
Cornus Alba 'Argenteo-Marginata'

Foliage is light green, variegated with creamy white. Very showy. Bark is dark red.
Ht 175cm-6' Sp 150cm-5' Z2

ELDER BLACK LACE – *Sambucus nigra 'Eva'*

Outstanding dark purple foliage is finely cut producing a lacy appearance. Part of the Proven Winners collection.
Ht 1.75m-6' Sp 1.75m -6' Z4

ELDER GOLDENLOCKS –
Sambucus racemosa 'Goldenlocks'

Compact globe-shaped shrub with finely cut yellow foliage. Small red fruit is produced in the fall. An outstanding plant for contrast in the landscape.
Ht .9m-3' Sp .9m-3' Z3

ELDER MORDEN GOLDEN GLOW –
Sambucus racemosa 'Morden Golden Glow'

The Golden Glow offers improved vigour and outstanding lacy, golden foliage.
Ht 1.5m -5' Sp 1.5m -5' Z2

ELDER SUTHERLAND GOLDEN PLUME –
Sambucus racemosa 'Sutherland'

Deeply cut bright yellow leaves. Does well in sunny location.
Ht 2m-6' Sp 2m 6' Z2



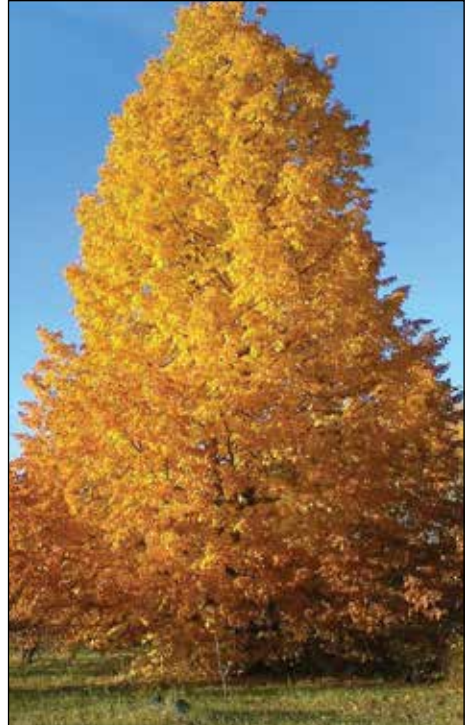
Japanese Tree Ivory Silk Lilac



Midnight Spire



Mancana Manchurian Ash



Dropmore Linden



Silver Maple



Unity Sugar Maple



Bur Oak



Delta Hackberry



Guardian Aspen



Star Light Crab



Swiss Stone Pine



Lodge Pole Pine



Philadelphus Blizzard Mockorange



Spirea Tor Birch Leaf



TreasuRed



Potentilla Marmalade

FALSE SPIREA SEM – *Sorbaroa x 'Sem'*

A compact shrub with pink-red spring foliage that takes on a chartreuse tint in summer. White flower plumes are produced in mid-summer.

Ht 125cm-4' Sp 125cm-4' Z3 ☀️

FORSYTHIA NORTHERN GOLD – *Forsythia*

Bright yellow flowers cover upright branches in spring before leaves appear.

Ht 2.5m-8' Sp 175cm-6' Z3 ☀️

HAZELNUT AMERICAN – *Corylus americana*

A native shrub that produces clusters of rounded, edible nuts. Attracts wildlife and creates a naturalized setting. Grows well in sun to partial shade.

Ht 175cm-6' Sp 175cm-6' Z3 ☀️

HONEYSUCKLE ARNOLD RED –***Lonicera tatarica***

Attractive red flowers in spring that turn into small red berries in the summer.

Ht 3m-10' Sp 175cm-6' Z2 ☀️

HONEYSUCKLE MINI GLOBE –***Lonicera x xylosteoides***

Compact, mound-shaped growth. Dense green foliage with creamy white flowers.

Ht 125cm-4' Sp 125cm-4' Z3 ☀️

HONEYSUCKLE SWEETBERRY –***Lonicera caerulea edulis***

Cream colored flowers in late May. Blue fruit and compact growth. Does well in sun or shade.

Ht 150cm-5' Sp 150cm-5' Z2 ☀️

HYDRANGEA ANNABELLE –***Hydrangea arborescens grandiflora***

Large creamy white, long-lasting flower heads. Cut back in fall as flowers are born on new wood.

Ht 125cm-4' Sp 125cm-4' Z3 ☀️

HYDRANGEA BOBO – *Hydrangea paniculata*

Hydrangea Bobo is a dwarf, panicle - type hydrangea with large white blooms in summer that take on a pinkish blush in fall.

Ht 125cm-4' Sp 125cm-4' Z3 ☀️

HYDRANGEA BOMBSHELL –***Hydrangea paniculata 'Bombshell'***

Bombshell has a compact habit and is a prolific bloomer. Abundant white blooms cover the dark green foliage from summer until frost.

Ht 90cm-3' Sp 125cm-4' Z3 ☀️

HYDRANGEA INCREDIBALL –***Hydrangea arborescens 'Abetwo'***

An exciting variant to Annabelle Hydrangea that produces massive 12" panicles on sturdy stems!

The flowers emerge lime green, changing to pure snowy white.

Ht 125cm-4' Sp 125cm-4' Z3 ☀️

HYDRANGEA INVINCIBELLE SPIRIT –***Hydrangea arborescens 'NCHAI'***

The first member of this species to offer rich pink mophead flowers in mid-summer. Heat tolerant. Grows in full sun to part shade. Soil PH does not affect bloom colour.

Ht 125cm-4' Sp 125cm-4' Z3 ☀️

HYDRANGEA LIMELIGHT –***Hydrangea paniculata 'Limelight'***

Upright rounded shrub with outstanding lime-green flowers. Adds a sudden burst of colour to the late summer landscape. Flowers on new wood.

Ht 2m-6' Sp 2m-6' Z3 ☀️

HYDRANGEA LITTLE LAMB –***Hydrangea paniculata 'Little Lamb'***

Masses of dense white panicles are produced on this compact rounded plant.

Ht 125cm-4' Sp 125cm-4' Z3 ☀️

HYDRANGEA LITTLE LIME –***Hydrangea paniculata 'Jane'***

A dwarf selection of the renowned Limelight Hydrangea. Its flowers take on a pink hue in fall and make spectacular bouquets.

Ht 125cm-4' Sp 125cm-4' Z3 ☀️

HYDRANGEA LITTLE LIME PUNCH*

Top reasons to grow Little Lime Punch* panicle hydrangea:- Fantastic color show - a mix of white, green, and pink all on one bloom!- Same useful, petite habit as Little Lime.- Impactful fall color.

Ht 3'-5' Sp 3'-5' Z3a ☀️

HYDRANGEA PEE GEE –***Hydrangea paniculata 'Grandiflora'***

Upright spreading. Large cluster of white flowers turning pink in fall. Semi shade. Z3B

Ht 2m-6' Sp 2.4m-8' Z3 ☀️

HYDRANGEA PINKY WINKY –***Hydrangea paniculata 'DVPpinky'***

A colourful new shrub with 14 inch double flowered panicles borne on strong stems. The cream flowers turn pink from the base of the inflorescence.

Ht 2m-6' Sp 2m-6' Z3 ☀️

HYDRANGEA QUICKFIRE –***Hydrangea paniculata 'Bulk'***

Well named for its early blooms that rapidly turn a deep and lasting pink.

Ht 150cm-5' Sp 150cm-5' Z3 ☀️

**HYDRANGEA Vanilla Strawberry -
Hydrangea paniculata 'Renhy'**

Enormous flower panicles are a blend of vanilla and strawberry. Red colour in flowers persists for 3-4 weeks.
Ht 150cm-5' Sp 150cm-5' Z3 ✨

LILAC BOOMERANG - *Syringa x Penda*

An exciting new selection with fragrant purple flowers that burst forth in spring and then again in mid-summer. Compact growth habit with small leaves.
Ht 150cm-5' Sp 125cm-4' Z3 ✨

**LILAC BEAUTY OF MOSCOW -
Syringa vulgaris (French)**

Panicles of double, delicate pale pink flowers that turn white with maturity. Stunning in bloom. Suckering.
Ht 2.5m-8' Sp 175cm-6' Z3 ✨

**LILAC CHARLES JOLY -
Syringa vulgaris (French)**

Smaller panicles of purple buds open to magenta double flowers.
Ht 2.5m-8' Sp 175cm-6' Z2 ✨

LILAC CORAL - *Syringa x prestoniae* 'Coral'

Very hardy, clear pink blooms in June. Non-suckering. Dark and leathery Leaves.
Ht 3m-10' Sp 2.5m-8' Z2 ✨

**LILAC DONALD WYMAN -
Syringa x prestoniae 'Donald Wyman'**

This Lilac has reddish-purple blooms in June. Non-suckering. Dark green foliage.
Ht 3m-10' Sp 2.5m-8' Z2 ✨

LILAC DWARF KOREAN - *Syringa meyeri Palibin*

Dwarf ball-shaped shrub, heavily fragrant pink flowers in late June. Bark is cherry-like.
Ht 150cm-5' Sp 150cm-5' Z3 ✨

**LILAC JAMES McFARLANE -
*Syringa x prestoniae***

True single pink. Blooms freely. Non-suckering, dark green foliage. Very hardy.
Ht 3m-10' Sp 2.5m-8' Z2 ✨

LILAC MINUET - *Syringa x prestoniae* 'Minuet'

A dark pink flower with a dwarf compact habit of growth. Non-suckering. Dark green foliage.
Ht 2.5m-8' Sp 175cm-6' Z2 ✨

**LILAC MISS CANADA -
Syringa x prestoniae 'Miss Canada'**

Clearer and brightest pink of all the non-suckering lilacs. Dark green foliage.
Ht 2.5m-8' Sp 2.5m-8' Z2 ✨

LILAC MISS KIM - *Syringa patula* 'Miss Kim'

Dwarf hardy, non-suckering lilac. Dark glossy green leaves turn red in fall. Lavender flowers.
Ht 2.5m-8' Sp 150cm-5' Z3 ✨

**LILAC MADAME LEMOINE -
Syringa vulgaris (French)**

Double creamy white flowers in May. Shiny leaves.
Ht 3m-10' Sp 3m-10' Z2 ✨

**LILAC PRESIDENT GREY -
Syringa vulgaris (French)**

Large clusters of fine blue flowers which are double & fragrant mid-season. Suckers.
Ht 4m-12' Sp 3m-10' Z2 ✨

**LILAC PRESIDENT LINCOLN -
Syringa vulgaris (French)**

Single, bluish-mauve blossoms in May. Shiny leaves.
Ht 3m-10' Sp 2m-6' Z2 ✨

LILAC ROYALTY - *Syringa x prestoniae*

Nice compact form, blooms have a rich imperial purple colour. Non-suckering.
Ht 2m-6' Sp 150cm-5' Z2 ✨

LILAC SENSATION - *Syringa vulgaris* (French)

Outstanding purple, fragrant flowers with white edges. Suckering.
Ht 3m-10' Sp 3m-10' Z3 ✨

LILAC VILLOSA - *Syringa villosa*

A dense tall shrub with stout ascending branches. This species blooms later than the common lilac. Lavender-pink flowers fade to gray-white. Non-suckering.
Ht 2.5m-8' Sp 175cm-6' Z2 ✨

**LILAC WEDGWOOD BLUE -
Syringa vulgaris (Father Fiala)**

Single, true blue flowers with lilac pink buds. Superb fragrance.
Ht 175cm-6' Sp 175cm-6' Z3 ✨

**AMUR MAPLE ATOMIC -
Acer ginnala 'Durglobe'**

Formerly known as 'Fireball', this globe-shaped selection of Amur Maple makes an excellent low hedge. Red fall colour.
Ht 125cm-4' Sp 125cm-4' Z2 ✨

**MOCKORANGE BLIZZARD -
*Philadelphus lewisii***

An upright shrub that becomes covered in cluster of fragrant blooms of white in summer. Hardy.
Ht 150cm-5' Sp 150cm-5' Z2 ✨

**MOCKORANGE GALAHAD -
*Philadelphus X Galahad***

Produces fragrant white flowers in early summer. Enjoys full sun and sheltered location.
Ht 150cm-5' Sp 90cm-3' Z3 ✨

NANNYBERRY - *Viburnum lentago*

A round shaped bush with dark shiny foliage. Large white flowers followed by black berries.
Ht 3m-10' Sp 3m-10' Z2 ✨

NINEBARK AMBER JUBILEE -***Physocarpus opulifolius 'Jefam'***

An exciting new hybrid ninebark resulting from a cross between Diabolo and Dart's Gold. Emerging foliage is an outstanding orange. Purple fall colour.

Ht 175cm-6' Sp 175cm-6' Z3 *

NINEBARK CENTER GLOW - *Physocarpus opulifolius*

Plant in full sun. Purple with brighter red colour. New foliage emerges golden then quickly changes to burgundy.

Ht 175cm-6' Sp 175cm Z3 *

NINEBARK COPPERTINA -***Physocarpus opulifolius 'Mindia'***

A hybrid between Dart's Gold and Diabolo. New growth is an attractive coppery colour. Foliage turns to a rich red in summer.

Ht 175cm-6' Sp 175cm-6' Z3 *

NINEBARK DARTS GOLD -***Physocarpus opulifolius 'Dart's Gold'***

A hardy attractive plant. Compact form, leaves golden yellow, white flowers in May.

Ht 175cm-6' Sp 175cm-6' Z2 *

NINEBARK DIABOLO -***Physocarpus opulifolius 'Monlo'***

Dark purple-leafed foliage with white flowers in May. Tolerates most soils. Sun or part shade.

Ht 175cm-6' Sp 175cm-6' Z3 *

NINEBARK LEMON CANDY -***Physocarpus opulifolius 'Podaras 3'***

Lemon Candy has rich, golden foliage from spring to fall. It features white blooms in spring. Its compact habit is excellent for foundation planting.

Ht 1m-3' Sp 1m-3' Z3 *

NINEBARK NUGGET -***Physocarpus opulifolius Nugget***

Compact, dense shrub with new yellow-bronze foliage maturing to lime green. Mass of white blooms in early summer. Contrast or hedge plant.

Ht 2m-6' Sp 100cm 42" Z3 *

NINEBARK SUMMER WINE -***Physocarpus opulifolius 'Seward'***

Neat, compact form with fine, deeply cut crimson red leaves and pink-white blooms in summer followed by red seed capsules. Requires little pruning.

Ht 150cm-5' Sp 125cm-4' Z3 *

POTENTILLA ABBOTSWOOD - *Potentilla fruticosa*

Very white flowers from June until October. Very hardy. Foliage is blue-green.

Ht 90cm-3' Sp 90cm-3' Z2 *

POTENTILLA CORONATION TRIUMPH -***Potentilla fruticosa***

Bright yellow flowers, loosely branched, foliage gray-green.

Ht 90cm-3' Sp 90cm-3' Z2 *

POTENTILLA GOLD DROP - *Potentilla fruticosa*

Compact hardy shrub with fern-like leaves. Lemon-yellow flowers that bloom in summer.

Ht 60cm-2' Sp 90cm-3' Z2 *

POTENTILLA GOLDFINGER - *Potentilla fruticosa*

Very showy golden flowers in summer, 1.5 inches in diameter. Dark green, course texture foliage.

Ht 90cm-3' Sp 90cm-3' Z2 *

POTENTILLA GOLD STAR - *Potentilla fruticosa*

Flowers larger than a looney - deep golden yellow until October. Largest of all *Potentilla*.

Ht 60cm -2' Sp 90cm-3' Z2 *

POTENTILLA KATHERINE DYKES -***Potentilla fruticosa***

Spreading habit of growth. Flowers are a soft yellow and leaves are grey green.

Ht 90cm-3' Sp 90cm-3' Z2 *

POTENTILLA PINK BEAUTY - *Potentilla fruticosa*

A semi-double clear pink flower with green foliage.

Ht 90cm-3' Sp 90cm-3' Z2 *

POTENTILLA RED ROBIN

Dense, mounding shrub, bright red flowers, low maintenance.

Ht 90cm-3' Sp 90cm-3' Z3 *

POTENTILLA SNOW BIRD - *Potentilla fruticosa*

A new pure white strain. Has small double blooms all summer. Good compact form.

Ht 39" Sp 39" Z2 *

POTENTILLA TANGERINE - *Potentilla fruticosa*

Flowers bright yellow with tinged orange in shaded area. Wide spreading with layered branches.

Ht 90cm-3' Sp 90cm-3' Z2 *

POTENTILLA YELLOW GEM - *Potentilla fruticosa*

Low mounded shrub, spreading to more than a meter across. Flowers are bright yellow.

Ht 30cm-12" Sp 90cm-3' Z2 *

PLUM DBLE FLOWERING -***Prunus triloba 'Multiplex'***

Fully double pink flowers are tightly clustered around stem before leaves appear. Hardy.

Ht 175cm-6' Sp 175cm-6' Z2 *

PURPLE LEAF SANDCHERRY CISTENA -***Prunus x cistena***

Also known as Purple Leaved Sandcherry. Small pink blossoms in spring, dark red foliage.

Ht 175cm-6' Sp 150cm-5' Z3 *

RUSSIAN ALMOND FLOWERING - *Prunus tenella*

Also known as Russian Almond. Rounded form, deep pink flowers. Suckers.

Ht 90cm-3' Sp 90cm-3' Z2 *

SERVICEBERRY – *Amelanchier alnifolia* ‘Obelisk’

A columnar selection of this cold hardy species. White spring flowers turn into edible berries. Orange-red fall colour. Can be used for hedging.

Ht 5m-15’ Sp 125cm-4’ Z2 ☀️

SPIREA BRIDAL WREATH – *Spiraea vanhouttei*

Vase shaped growth with arching branches. Clusters of showy white flowers. Blue- green foliage.

Ht 175cm-6’ Sp 150cm-5’ Z2 ☀️ ☀️

SPIREA DAKOTA GOLDCHARM –***Spiraea japonica* ‘Mertyam’**

A very dwarf, gold leaved Spirea that grows well in full sun. The new leaves are a light bronze colour before turning yellow-gold.

Ht 45cm-18” Sp 90cm-3’ Z3 ☀️ ☀️

SPIREA FLAMING MOUND – *Spiraea x bumalda*

A shrub with tight, mound-forming habit and attractive flaming-red foliage.

Ht 60cm-2’ Sp 60cm-2’ Z3 ☀️ ☀️

SPIREA FROEBELLI – *Spiraea x bumalda*

Produces flat clusters of pink flowers in July. Has purple tip foliage in spring.

Ht 125cm-4’ Sp 125cm-4’ Z3 ☀️ ☀️

SPIREA GOLDFLAME – *Spiraea x bumalda*

A golden leaved dwarf shrub. Flowers are crimson-red in July. I deal for borders.

Ht 90cm-3’ Sp 90cm-3’ Z3 ☀️ ☀️

SPIREA GOLDMOUND – *Spiraea x japonica*

Beautiful golden foliage lasting all summer. Soft pink flowers appear June to August.

Ht 60cm-2’ Sp 60cm-2’ Z3 ☀️ ☀️

SPIREA LITTLE PRICCESS – *Spiraea x japonica*

Dwarf compact mound, flatter shape. Rose colored flowers, fall color is dark red.

Ht 60cm-2’ Sp 90cm-3’ Z3 ☀️ ☀️

SPIREA MAGIC CARPET – *Spiraea x japonica*

The best dwarf spirea with multi-coloured foliage that emerges as red in the spring and matures into rich bronze, red-tipped foliage. The clusters of deep pink flowers blanket the plant in early summer. The foliage turns a russet colour in fall.

Ht 45cm-18” Sp 60cm- 2’ Z3 ☀️ ☀️

SPIREA THREELOBED – *Spiraea trilobata*

Ball-shaped. Finest of the white spireas, neat growth habit.

90cm-3’ Sp 90cm-3’ Z2 ☀️ ☀️

SPIREA TOR – *Spiraea betulifolia* ‘Tor’

A compact mound of dark green, birch-like leaves. Tiny white flowers in late summer. Fall colour in shades of orange, red and purple. Excellent in rock gardens.

Ht 90cm-3’ Sp 90cm-3’ Z3 ☀️ ☀️

WAYFARING TREE – *Viburnum lentana* ‘Mohican’

Rounded form, white blossoms precede showy red fruit which turns black with maturity.

Ht 175cm-6’ Sp 175cm-6’ Z3 ☀️ ☀️

WEIGELA RED PRINCE – *Weigela florida*

Showy red trumpet-shaped flowers in May- June. Requires sheltered spot.

Ht 90cm-3’ Sp 90cm-3’ Z3b ☀️ ☀️

WEIGELA RUMBA – *Weigela florida*

Attractive shrub with dark red trumpet-shaped flowers in May-June. Needs sheltered area.

Ht 75cm-30” Sp 75cm-30” Z3b ☀️ ☀️

WILLOW BLUE FOX – *Salix brachycarpa*

Dwarf Shrub. Bluish gray foliage. Enjoys full sun. Very hardy.

Ht 90cm-3’ Sp 90cm-3’ Z2 ☀️ ☀️

WILLOW DWARF BLUE ARCTIC –***Salix purpurea* ‘Nana’**

An attractive hedge plant with fine-texture, blue-green foliage and purple twigs in winter.

Ht 90cm-3’ Sp 90cm-3’ Z3 ☀️ ☀️

WILLOW POWDER FACE – *Salix commutata*

Dense, powder-blue foliage on an upright form. Prairie hardy, drought-tolerant willow is excellent for hedging.

Ht 100cm-40” Sp 100cm-40” Z3 ☀️ ☀️

WILLOW FLAMINGO – *Salix integra*

New pink-white foliage retained through growing season. Improvement over Nishiki Willow. Resistant to leaf scorch.

Ht 60cm-2’ Sp 60cm-2’ Z3 ☀️ ☀️

SHRUB PRICING

1 gal - \$22.25 3 gal - \$60.50

2 gal - \$42.50 5 gal - \$80.25

SPECIALTY SHRUBS PRICING

Weeping Caragana

Weeping Flowering Crabapple

4 feet - \$129.00 5 feet - \$148.00

VINES**CLEMATIS ALPINA WILLY – *Clematis alpina***

Mauve-pink, bell-shaped blooms in spring followed by attractive seed heads. Prune dead, weak or old stems after flowering period. Shade roots.

Ht 1.75m-8’ Sp 90cm-3’ Z3 ☀️ ☀️

CLEMATIS BLUE BIRD – *Clematis macropetala*

Vigorous, hardy vine with dainty lavender bell-shaped blooms in spring. Prune weak or dead stems after spring blooming. Shade roots.

Ht 3m-10’ Sp 90cm-3’ Z2 ☀️ ☀️

CLEMATIS BLUE BOY – Clematis x ‘Blue Boy’

Nobbing, 4-5” steel-blue flowers. Blooms from June to September.

Ht 3m-10’ Sp 90cm-3’ Z2 ✨ ☀

CLEMATIS HAGLEY HYBRID – Clematis

Beautiful pink chiffon blooms are 15cm-6” in size. Blooms in mid-late summer.

Ht 1.75m-8’ Sp 90cm-3’ Z3 ✨ ☀

CLEMATIS JACKMANII – Clematis Jackmanii

Popular variety for hardiness with velvety deep purple petals from summer to early fall. Prune in spring; blooms on current season’s growth only. Shade roots.

Ht 4m-13’ Sp 90cm-3’ Z2 ✨ ☀

CLEMATIS JACKMANII ‘SUPERBA’-**Clematis Jackmanii superba**

Huge violet, overhanging blooms throughout summer. Prune in spring; blooms on current season’s growth only. Shade roots.

Ht 3m-10’ Sp 90cm-3’ Z2 ✨ ☀

CLEMATIS TANGUTICA – Clematis

Vigorous grower. Very floriferous. Yellow flowers.

Ht 3m-10’ Sp 90cm-3’ Z2 ✨ ☀

DROPMORE SCARLET HONEYSUCKLE – Lonicera

A hardy vine with orange trumpet shaped flowers, which appear from June to late fall.

Ht 3m-10’ Sp 175cm-6’ Z3 ✨ ☀

ENGLEMAN’S IVY – Parthenocissis

Rapid grower. Foliage turns a brilliant red in fall.

Glossy green leaves throughout summer.

Ht 4m-12’ Sp 125cm-4’ Z3 ✨ ☀

HOPS COMMON – Humulus lupulus

Hardy, vigorous vine with dark green foliage and hairy stems. Requires support structure.

Ht 4m-12’ Sp varies Z3 ✨ ☀

VIRGINIA CREEPER – Parthenocissis

A hardy clinging vine with dense, green foliage.

Bright red fall colour.

Ht 6m-20’ Sp 125cm-4’ Z3 ✨ ☀

VINE
PRICING

1 gal - \$22.25

2 gal- \$42.50

ROSES

AVAILABILITY OF ROSE VARIETIES
CHANGES YEARLY.

PLEASE CALL FOR CURRENT INVENTORY

ROSE ABOVE AND BEYOND CLIMBING ROSE™

Above and Beyond™ Rose is a truly special climbing rose for cold climates as it combines reliable spring flowering, vigorous growth, resistance to fungal disease, and unique color. Orange flower buds open in prolific clusters of five or more apricot colored semidouble to double flowers. Above and Beyond™ blooms in mid-to-late spring with sporadic repeat flowering in summer. With extreme cane hardiness, Above and Beyond™ can be a climber or a large free-standing shrub in colder regions where plant dieback from cold may otherwise be an issue.

Ht 6’-8’ Z3 ✨

ROSES ALEXANDER MACKENZIE (Explorer Series)

A deep red with cup-shaped flowers. Highly resistant to blackspot.

Ht 125cm-4’ Sp 125cm-4’ Z3 ✨

ROSE BILL REID (Shrub Rose- Artists Series)

The latest in the Canadian Artist Rose series this attractive yellow rose named for the acclaimed Haida sculptor. Compact plant with good disease resistance.

Ht 90cm-3’ Sp 90cm-3’ Z3 ✨

ROSES BLANC DE COUBERT (Rogosa Series)

Produces large double, sweetly scented, pure white flowers. Recurrent bloomer.

Ht 150cm-5’ Sp 150cm-5’ Z2 ✨

ROSE CAMPFIRE (Shrub Rose - Artist Series)

New for 2013 - An exceptional new Canadian Artist Series Rose. Flowers are tri-coloured (purple red, white and yellow).

Ht 90cm-3’ Sp 90cm-3’ Z3 ✨

ROSE CAPTAIN SAMUEL HOLLAND (Explorer Series)

Hardy climber, with medium red, slightly scented flowers. Semi-double flowers.

Ht 175cm-6’ Sp 90cm-3’ Z3 ✨
2 gal. \$33.00

ROSE CHAMPLAIN (Explorer Series)

Hardy dark red rose that flowers freely all summer. Slightly fragrant.

Ht 90cm-3’ Sp 90cm-3’ Z3 ✨

ROSE COUNTRY DANCER (Shrub Rose)

Country Dancer is the perfect rose for tough climates. It is fragrant, virtually indestructible and visually beautiful. Great for hedging.

Ht 125cm-4’ Sp 125cm-4’ Z3 ✨

ROSE CUTHBERT GRANT (Parkland Series)

Double dark red blossoms up to 10cm wide in clusters.

Ht 125cm-4’ Sp 90cm-3’ Z3 ✨

ROSE DE MONTARVILLE (Explorer Series)

A new explorer rose with tight red buds that open to a medium pink. Extremely resistant to powdery mildew.

Ht 90cm-3’ Sp 90cm-3’ Z3 ✨

ROSE EMILY CARR (*Shrub Rose – Artists Series*)

This upright shrub covers itself in a cluster of large, deep red blooms all season. With its rich flower colour, disease resistant foliage and cold hardiness, it is sure to be a valuable addition.

Ht 60cm-2' Sp 60cm-2' Z3 ☀

ROSE FELIX LECLERC (*Shrub Rose – Artists Series*)

This tall growing shrub covers itself in a cluster of large, pink blooms all season. With its arching growth and exceptional disease resistance, it is sure to be a valued addition.

Ht 3m-10' Sp 150cm-5' Z3 ☀

ROSE HANSA (*Rugosa Hansa*)

Large, very fragrant, double, deep crimson coloured flowers. Recurrent blooms.

Ht 125cm-4' Sp 90cm-3' Z3 ☀

ROSE HAZELDEAN (*Rosa Hazeldean*)

Tall rose grows 6-8'. Showy yellow flowers. Best disease resistant of yellow roses. Very hardy.

Ht 175cm-6' Sp 125cm-4' Z2 ☀

ROSE HENRY KELSEY (*Explorer Series*)

This hardy climber is very disease resistant and flowers repeatedly through the summer. Flowers have a spicy fragrance.

Ht 2.5m-8' Sp 90cm-3' Z3 ☀

ROSE HOPE FOR HUMANITY (*Parkland Series*)

The double 'blood' red flowers are cup shaped and average 8cm in diameter. Slightly fragrant.

Ht 90cm-3' Sp 60cm-2' Z3 ☀

ROSE HUNTER (*Hybrid Rugosa*)

It is easy to pick the brilliant red, fully double blooms to hunter out of the bunch. Its deliciously fragrant flowers are set off by clean, glossy dark-green foliage.

Ht 90cm-3' Sp 90cm-3' Z3 ☀

ROSE J.P. CONNELL (*Explorer series*)

This vigorous, upright shrub rose produces beautiful, double, lemony blooms. Flowering starts in June and continues all season long. The first yellow in the explorer series.

Ht 125cm-4' Sp 125cm 4' Z3 ☀

ROSE JENS MONK (*Explorer series*)

This vigorous, extremely healthy, upright shrub produces beautiful, medium pink blooms streaked with white at the base. This easy care shrub produces loads of flowers all season long.

Ht 125cm-4' Sp 125cm-4' Z2 ☀

ROSE JOHN CABOT (*Explorer Series*)

A medium red flower that blooms freely in June-July. Used as a climber.

Ht 2.5m-9' Sp 125cm-4' Z2b ☀

ROSE JOHN DAVIS (*Explorer Series*)

An ever-blooming rose that can be trained into a climber. Produces clusters of pink fragrant flowers. It is disease resistant.

Ht 175cm-6' Sp 125cm-4' Z3 ☀

ROSE LAMBERT CLOSSE ROSE (*Explorer Series*)

Medium pink flowers. Blooms from June to September. Resistant to mildew and blackspot.

Ht 90cm-3' Sp 90cm-3' Z3 ☀

ROSE MARTIN FROBISHER (*Explorer Series*)

Tight pink flowers blending to softer pink toward the edges are produced all season by this vigorous upright shrub.

Ht 150cm-5' Sp 150cm-5' Z2b ☀

ROSE MORDEN BELLE (*Parkland Series*)

The newest of the Parkland Rose Series. This Rose has loads of flowers all summer. Foliage is a glossy green. Resistant to powdery mildew and rust.

Ht 90cm-3' Sp 90cm-3' Z2 ☀

ROSE MORDEN BLUSH (*Parkland Series*)

Fragrant double ivory flowers with pink-blush centre. Tolerant to drought.

Ht 90cm-3' Sp 90cm-3' Z3 ☀

ROSE MORDEN CENTENNIAL (*Parkland Series*)

Fragrant, double, medium pink flowers. Blooms repeatedly.

Ht 90cm-4' Sp 150cm-4' Z2 ☀

ROSE MORDEN FIRE GLOW (*Parkland Series*)

Double, scarlet-red flowers. Blooms repeatedly.

Ht 90cm-3' Sp 90cm-3' Z2b ☀

ROSE MORDEN SUNRISE (*Parkland Series*)

Morden Sunrise is the first hardy, yellow flowering Parkland rose. A recurrent blooming shrub rose with good early season resistance to black spot, mildew and rust.

Ht 60cm-2' Sp 60cm-2' Z3 ☀

ROSE PERSIAN YELLOW (*Rosa Persian Yellow*)

Small bright yellow flowers are semi-double. Foliage is shiny dark green.

Ht 150cm-5' Sp 150cm-5' Z2b ☀

ROSE PRAIRIE DAWN (*Shrub Rose*)

Prairie Dawn's flowers are glowing pink and produce all season long. The foliage is dark and glossy and the plant has an upright growth habit.

Ht 150cm-5' Sp 150cm-5' Z3 ☀

ROSE PRAIRIE JOY (*Shrub Series*)

Double flowers are light to medium pink. Slightly fragrant.

Ht 125cm-4' Sp 125cm-4' Z2 ☀

ROSE RUGELDA (Hybrid Rugosa)

Red buds open to fragrant, double yellow blooms with a pink fringe that flowers recurrently from early summer to late fall. Shiny, crinkled, disease resistant foliage.
 Ht 125cm-4' Sp 125cm-4' Z3 *

ROSE SIR THOMAS LIPTON (Rugosa)

This rose is most impressive in late spring when it displays the majority of its pure white fragrant flowers.
 Ht 175cm-6' Sp 175cm-6' Z3 *

ROSE THERESA BUGNET (Rosa Therese Bugnet)

Buds are dark red. Large semi-double flower is pink and very fragrant.
 Ht 150cm-5' Sp 150cm-5' Z2b *

ROSE TOPAZ JEWEL (Rugosa)

Re-blooming yellow, fragrant flowers. Three inches in diameter.
 Ht 150cm-5' Sp 150cm-5' Z3b *

ROSE WINNIPEG PARKS (Parkland Series)

Large, dark pink flowers that are slightly fragrant. Recurrent bloomer.
 Ht 60cm-2' Sp 60cm-2' Grower Z2b *

ROSE WILLIAM BAFFIN (Explorer Series)

Can be used as a climber. Beautiful pink clusters of up to 30 blooms. Hardy, vigorous, disease resistant and continuous flowering.
 Ht 175cm-6' Sp 90cm-3' Z2b *

ROSE PRICING

1 gal - \$25.00

2 gal- \$37.50

Top Graft Rose \$110.00

FRUIT TREES

APPLES

Fruit Trees - Malus, Prunus, Pyrus

Apples, Applecrabs, Pears and Plums, require cross pollination for good fruit production. Usually any two or three cultivars will give sufficient overlap in flowering periods for effective pollination. Dwarf varieties are half the size of regular varieties. Average height of fruit trees are shown below. Apples available in regular root stock and some varieties in Dwarf Root Stock. Please enquire.

Regular			
Ht 5m-16'	Sp 4m-12'	Z 2-3	*
Dwarf			
50% smaller		Z 2-3	*

APPLE BATTLEFORD - Malus x Battleford

Very hardy, large sized, greenish-yellow fruit striped with red. Mid-August. Fruit size 6-7.5 cm *

APPLE COLLET - Malus

Medium sized fruit; light green with medium red; Ripens early September. *

COMBINATION APPLE

Three to five varieties on each tree. *

**SPECIALTY
TREE**

APPLE FALL RED - Malus

Medium sized fruit, yellowish-green with red over; flesh is white with good quality and texture. Ripens mid-September. *

APPLE GOODLAND (Patten Greening Seedling) - Malus

Very hardy; medium to large size, bright red over creamy yellow; sweet and juicy. Early September. *

APPLE GEMINI (Norland * Haralson) - Malus

A crisp, juicy, medium sweet apple. Red over pale yellow fruit ripens late August. Stores well. *

APPLE HARALSON - Malus

A medium sized apple. Red in colour with juicy fruit. Used for eating out of hand and is a good keeper. Very hardy. *

APPLE HONEYCRISP - Malus

Honeycrisp has large red over yellow fruit. Very Crisp texture and excellent flavor. Harvest in mid September. *

APPLE HARCOURT - Malus

A full hardy tree with bright red medium sized fruit. Pleasantly flavoured fruit, very good for eating, cooking & storage. *

APPLE HEYER 12 - Malus

Very hardy; medium to large amber colored fruit. Best for cooking and preserving. Harvest in August. *

**SPECIALTY
TREE**

APPLE NORKENT (Haralson + Rescue cross) - Malus

Large fruit, pleasant apple/pear taste similar to Golden Delicious. Very hardy. Fruit maturing late August. *

APPLE NORLAND - Malus

Fine apple with fruit 6-7cm with good red colour. Ripens in mid August. Stores well. *

APPLE PARKLAND - Malus

Fruit is 6-7cm with greenish yellow, striped light red. Good for eating and cooking. Ripens mid August. *

APPLE TreasuRed

"TreasuRed" is a columnar apple tree (1-1.2m wide) that is great for small yards as it takes up less than 1/3 the normal space, while maintaining high yields. It produces large, bright red apples with a waxy appearance on short spurs along the main trunk. The fruit ripens in mid-September and the texture and flavour are similar to 'McIntosh' *

**SPECIALTY
TREE**

APPLE PRAIRIE MAGIC – *Malus*

The medium/large size red fruit matures in mid-September and is crisp and delicious. Good cold hardiness & disease resistance.

APPLE SK PRAIRIE SUN – *Malus*

The fruit is yellowish cream with a pink blush. Fruit is 3" in size. Fine texture, crisp, juicy, sweet and good fresh eating.

APPLE PRAIRIE SENSATION – *Malus*

The 8.5cm green fruit has a washed overlay of red. Flesh is firm, juicy & crisp. Highly ranked, good fresh eating and cooking.

APPLE RED SPARKLE (Trail+MacIntosh) – *Malus*

A medium sized apple, with nutty flavor. Apples matures in late September.

APPLE SEPTEMBER RUBY (Rescue+Haralson) – *Malus*

Fruit size is 7cm in diameter. Good eating qualities with white flesh and red surface. Harvest in September.

APPLE CRAB KERR – *Malus*

Fruit is long, dark red shape, crisp flesh. Ideal for canning, sauces and jelly.

APPLE CRAB RESCUE – *Malus*

Sweet, large red apple crab – tastes like an apple. Very hardy tree that yields well. Needs very little sugar.

APPLE CRAB TRAIL – *Malus*

Best quality of all apple crabs. Yellow striped with red. Flavour is one of the best. Sweet and juicy.

APPLE CRAB TRAILMAN – *Malus*

A very hardy apple crab. Yellow overlaid with reddish fruit. Sweet trail flavour.

APRICOT

APRICOT CASINO – *Prunus*

A high quality fruit that is free stone, ripens in August, oval to slightly oblong and yellow with red tinge on the blish. It is semi-self pollination.



APRICOTS WESTCOT – *Prunus*

This variety has a mild sweet flavour. The skin is of medium thickness and the stone is free from the flesh.



PLUM

PLUM BROOK GOLD – *Prunus*

Golden yellow fruit, tender skin, good for eating and cooking. Ripens mid-September. Hardy. Early flowering.

PLUM BROOK RED – *Prunus*

Dark red fruit. Heavy producer. Hardy, vigorous grower. Good for eating fresh. Late flowering.

PLUM PEMBINA – *Prunus*

Dark red fruit has bluish overtones. Yellow flesh is juicy and sweet. Best eaten fresh. Very hardy. Late flowering.

PLUM TECUMSEH – *Prunus*

Fruit is bright red with bluish overtones. Yellow flesh is firm, juicy and sweet. Mid flowering.

PLUM TOKA – *Prunus*

An excellent pollinator that produces 3-4cm dark red, rich-flavored fruit. Fruit ripens in late-August.



PEAR

PEAR EARLY GOLD – *Pyrus*

This variety of Ure is hardier and matures faster. The greenish-gold juicy fruit ripens late September.

PEAR GOLDEN SPICE – *Pyrus*

Med. yellow fruit blushed with red. Good for eating and canning. Ripens mid to late September.



PEAR URE – *Pyrus*

Very hardy high quality pear. Greenish yellow fruit ripens mid-September. Good for eating fresh and canning.

PEAR USSURIAN – *Pyrus*

A hardy and very beautiful tree with white flowers and exquisite shape. Used for pollinator and ornamental.

PINCHERRY

PINCHERRY JUMPING POUND – *Prunus pensylvanica*

Fruit measures 7/16 of an inch in diameter. Tree is about 13' high with weeping habit.

PINCHERRY MARY LISS – *Prunus pensylvanica*

Good sized fruit – slightly larger than Jumping Pound. Tree is upright with sturdy trunk. Does not sucker.

FRUIT TREE PRICING

Apple / Plum / Pear / Pincherry			
2 feet - \$42.00	5 feet - \$86.75	8 feet - \$165.50	
3 feet - \$66.25	6 feet - \$97.00		
4 feet - \$76.50	7 feet - \$117.25		

SPECIALTY FRUIT PRICING

Apple / Plum / Pear / Apricot			
3 feet - \$72.50	5 feet - \$102.50	7 feet - \$138.50	
4 feet - \$84.50	6 feet - \$120.50		

SMALL FRUIT

ASPARAGUS MARY WASHINGTON

An old favourite, with a vigorous growth habit, producing tender green spears with slight purple overcast and compact heads with excellent flavour. Harvest in early spring.
Ht 90cm-3' Sp 60cm-3' Z3 *

ASPARAGUS PRICING

4.5" - \$4.00 1 gal - \$6.50

BLUEBERRIES

BLUEBERRY CHIPPEWA - *Vaccinium*

Hardy, upright, self-pollinating variety with large berries ripening earlier than other varieties. Sweet flavoured fruit in midsummer. Prefers moist, acidic soil.
Ht 90cm-3' Sp 90cm-3' Z3 *

BLUEBERRY NORTHBLUE - *Vaccinium*

Dwarf, self-fertile plant with white blooms in spring and glossy foliage which turns red in fall. Large, dark, mid-season blueberries have superior processed flavour. Prefers moist, acidic soil.
Ht 90cm-3' Sp 90cm-3' Z3 *

BLUEBERRY NORTHCOUNTRY - *Vaccinium*

White blooms in spring and glossy green foliage which turns red in fall. Late season blueberry produces acidic soil.
Ht 90cm-3' Sp 90cm-3' Z3 *

BLUEBERRY NORTHSKY - *Vaccinium*

White blooms in spring and glossy green foliage turning red in fall. Hardy cultivar with small to medium sized sweet, mid-season blueberries. Prefers moist, acidic soil.
Ht 90cm-3' Sp 90cm-3' Z3 *

BLUEBERRY ST.CLOUD - *Vaccinium*

Heavily productive variety with more upright habit and medium sized berries ripening earlier than others. Superior firmness and flavour for fresh eating. Requires another cultivar for pollination and moist acidic soil.
Ht 90cm-3' Sp 90cm-3' Z3 *

CHERRIES

CARMINE JEWEL - *Prunus x kerrasis (U of S)*

A dwarf sour cherry is a low suckering shrub form. Fruit skin & flesh color are dark red. Average size and cold hardy. Harvest in July or August. No pollinator required.
Ht 2.5m-8' Sp 2m-6' Z2 *

CHERRY CRIMSON PASSION -

Prunus x kerrasis (U of S)

The fruit is very dark red rounded to slightly cordate and large. The flesh is very good quality with the highest sugar content of all the U of S cultivars. It is excellent for fresh eating & good for juicing. Harvest in early to mid-August. No pollinator required.
Ht 2.5m-8' Sp 2m-6' Z3 *

CHERRY CUPID - *Prunus x kerrasis (U of S)*

Blooms a week earlier than the other cherries. Few suckers. It matures in late August. The fruit is very dark red to near black and is the largest fruit obtained to date. It has excellent flavour. Good for fresh eating and processing. No pollinator required.
Ht 2.5m-8' Sp 2m-6' Z2 *

CHERRY JULIETTE - *Prunus x kerrasis (U of S)*

The dark red fruit is rounded and medium in size. The flesh is excellent quality, with high sugar content. Excellent for fresh eating and processing. Ripens in mid August. No pollinator required.
Ht 2.5m-8' Sp 2m-6' Z2 *

CHERRY ROMEO - *Prunus x kerrasis (U of S)*

The fruit is dark red to nearly black at maturity. Medium in size. Very flavourful - good for fresh eating and processing. Harvest in late August to early September. No pollinator required.
Ht 2.5m-8' Sp 2m-6' Z2 *

CHERRY PLUM SAPA - *Prunus x kerrasis (U of S)*

The fruit is medium bright red in colour and medium size. Produces large crops. A little too tart for fresh eating but good for processing. Harvest in early to mid August. No pollinator required.
Ht 2.5m-8' Sp 2m-6' Z2 *

CHERRY EVENS - *Prunus*

Fruit is bright red cherry with translucent flesh. Fruit can be left on tree well into September. Self-pollinating. Harvest in July-August.
Ht 4m-13' Sp 3m-10' Z3 *

CHERRY NANKING - *Prunus tomentosa*

Pale pink flowers. 1/2" red cherries. Good for fresh eating and jelly. Ripens mid-July.
Ht 2m-6' Sp 2m-6' Z2 *

CHERRY ROCKY MNT. SAND - *Prunus besseyi*

White flowers, grey leaves, and 1/2" black fruit. Pollinator for cherry plums. Late flowering.
Ht 90cm-3' Sp 45cm-18" Z2 *

CHERRY PLUM CONVOY - *Prunus x 'Convoy'*

Bright red fruit, juicy yellow flesh, good for eating and canning. Late flowering.
Ht 3m-10' Sp 2.5m-8' Z2 *

CHERRY PLUM DURA - *Prunus*

Dull green fruit blotched purple. Skin is thin, red flesh. Juicy and sweet. Good for canning.
Ht 3m-10' Sp 2.5m-8' Z3 *

CHERRY PLUM OPATA - *Prunus*

Fruit is greenish with reddish-purple overtones, medium skinned. Flesh is yellowish-green. Mid flowering.
Ht 3m-10' Sp 2.5m-8' Z2 *

CHERRY PLUM SAPA – *Prunus*

Fruit has light bluish skin, dark purple flesh.

Good for fresh eating. Mid flowering.

Ht 3m-10' Sp 2m-6' Z3 *

CURRANT**CURRANT BEN NEVIS BLACK – *Ribes***

A mild black fruit of good size. Perfect for jelly and preserves. Flowers are yellow.

Ht 125cm-4' Sp 125cm-4' Z2 * *

CURRANT RED LAKE – *Ribes*

Edible. Large red fruit born in long clusters. Good for Jelly.

Ht 2m-6' Sp 2m-6' Z2 * *

CURRANT WHITE – *Ribes*

Edible. Fruit is white with a greenish tinge. Good for jelly, jam or wine.

Ht 125cm-4' Sp 125cm-4' Z3b * *

GRAPE**GRAPE BETA – *Vitis***

Is a hybrid. Very hardy and heavy producer of blue fruit. Fruit is of good quality. Makes excellent jelly and wine.

Ht 6m-20' Sp 90cm-3' Z3 *

GRAPE FRONTENAC – *Vitis*

Vigorous growing red grape. Producing a good quality juice for wine making. Good disease resistance. Ripens in September.

Ht 2m-20' Sp 90cm-3' Z3 *

GRAPE NATIVE – *Vitis*

Grown more as an ornamental vine. Small blue fruit is used for jam and jellies. Red fall colour.

Ht 6m-20' Sp 90cm-3' Z2 *

GRAPE VALIANT – *Vitis*

Earlier maturing and hardier than Beta. Blue fruit is good for jam, jelly and wine.

Ht 6m-20' Sp 90cm-3' Z3 *

GOOSEBERRY**GOOSEBERRY HINNOMAKI RED – *Ribes***

Heavily produces large red sweet fruit, upright growth habit, hardy and disease resistant.

Ht 90cm-3' Sp 2m-6' Z3 *

GOOSEBERRY PIXWELL – *Ribes*

Excellent producer of green/pink fruit for jelly and wine. Also brilliant burgundy fall colour. Ripens in mid-summer.

Ht 125cm-4' Sp 125cm-4' Z2 *

HONEYBERRY**HONEYBERRY BERRY BLUE – *Lonicera edulis Kam***

Is the most vigorous of our varieties and forms a very upright bush. Bears abundant crops of large oval-shaped, deep blue tasty berries. Ripens early summer. Berry Blue is considered the best pollinator for the Haskap.

Ht 2m-6' Sp 2m-6' Z2 * *

HONEYBERRY BLUE BELLE – *Lonicera edulis Kam*

Blue Belle forms a more compact and spreading shrub. It bears good crops of large, deep-blue oval, tasty fruit.

Ht 125cm-4' Sp 125cm-4' Z2 * *

HASKAP**HASKAP AURORA**

A new Haskap variety available in 2013 or 2014. It is a companion for 'Borealis' but will also pollinize 'Tundra' and 'Indigo'.

Ht 5' Sp 6' Z2 * *

HASKAP HONEYBEE

Honeybee is slightly larger than Borealis. It is fast growing, productive and starts fruiting at an early age. Pollinates up to 8 plants and is a pollinator for Borealis, Tundra and Indigo

Ht 6' Sp 6' Z2 * *

HASKAP BOREALIS (9-94) – *Lonicera edulis Kam.'Boarealis'*

Large oval blue berries and best tasting fruit, great for homeowners. Harvest in June.

Ht 125cm-4' Sp 125cm-4' Z2 * *

HASKAP TUNDRA (9-84) – *Lonicera edulis Kam.'Tundra'*

Blue berries with excellent flavour and great for commercial growers. Harvest in June.

Ht 125cm-4' Sp 125cm-4' Z2 * *

HASKAP INDIGO GEM (9-15) – *Lonicera edulis Kam.*

Great blue berries with good flavour. Can be dried for snacks. Excellent for homeowner or commercial use. Harvest in June.

Ht 125cm-4' Sp 125cm-4' Z2 * *

HASKAP INDIGO TREAT (9-91) – *Lonicera edulis Kam.*

Excellent tasting. Large, firm, oval, blue fruit. Harvest in June.

Ht 125cm-4' Sp 125cm-4' Z2 * *

JOSTA BERRY

Developed in Germany, cross between black currant and gooseberry. Dual purpose plant, excellent eating, rich in Vitamin C. Compact for hedging.

Ht 4' x 4'-6' Z2b * *

RASPBERRY

RASPBERRIES BOYNE – *Rubus*

Large, sweet, dark red berries, excellent for eating fresh, freezing or canning.

Ht 125cm-4' Sp 125cm-4' Z3 ☀

RASPBERRY SK RED MAMMOTH – *Rubus*

A bright red, slightly conical shaped. Redness remains after 3-6 days of storage. Sweet, firm texture. Hardier than the Boyne.

Ht 125cm-4' Sp 125cm-4' Z2 ☀

RASPBERRY SK RED BOUNTY – *Rubus*

Bright red round shape. Sweet, firm texture. Good storage. Higher yields, hardier and more vigorous than Boyne.

Ht 125cm-4' Sp 125cm-4' Z2 ☀

RASPBERRY BLACK CAP – *Rubus*

Mid-season. Produces large, firm, sweet black berries. Hardy and very productive canes.

Ht 125cm-4' Sp 125cm-4' Z2 ☀

RASPBERRY FALL GOLD – *Rubus*

Two crops per year – summer & fall. Fruit is large, yellow with very sweet flavor and very juicy.

125cm-4' Sp 125cm-4' Z3 ☀

RASPBERRY RED RIVER – *Rubus*

A primo-cane with red, sweet fruit harvested on same year wood. Heavy producer. Harvest in late summer.

Ht 90cm-3' Sp 90cm-3' Z3 ☀

RASPBERRY PRICING

Red & Yellow — 1 gallon - \$9.50

Black — 1 gallon - \$13.00

RHUBARB

RHUBARB CANADA RED – *Rheum*

Vigorous, heavy producer. Vivid red stalks with juicy and red flesh. Harvest in early September.

Ht 90cm-3' Sp 90cm-3' Z2 ☀

SASKATOON HONEYWOOD – *Amelanchier*

Exceptionally large, juicy blue berries in large clusters with very good flavour. A compact bush with high productivity. Harvest in early summer.

Ht 3m-10' Sp 2m-6' Z2 ☀

SASKATOON JB30 – *Amelanchier*

Juicy blue berries. Yields comparable to Martin and Thiessen with 13mm size berries.

Ht 3m-10' Sp 2m-6' Z2 ☀

SASKATOON MARTIN – *Amelanchier*

Largest fruit available. A great tasting saskatoon with more uniform ripening berries. The berries are 17mm in size. Harvest in early summer.

Ht 8' Sp 2m-6' Z3 ☀

SASKATOON NATIVE – *Amelanchier*

White flowers in May. Large, full-flavored fruit. Red-orange fall color. Self-fertile. Harvest in early summer.

Ht 3m-16' Sp 2m-6' Z2 ☀

SASKATOON NORTHLINE – *Amelanchier*

Heavy producer of 16mm fruit with excellent flavor. Bears at an earlier age than others.

Harvest in early summer.

Ht 2m-6' Sp 2m-6' Z2 ☀

SASKATOON SMOKY – *Amelanchier*

Sweetest of all saskatoons with 14mm size berries. Suckers freely.

Harvest in early summer.

Ht 3m-10' Sp 2m-6' Z2 ☀

SASKATOON THIESSEN – *Amelanchier*

Nice white flowers in early May.

A heavy producer of 17mm size fruit that have a mild, pleasant flavour. Harvest in early summer.

Ht 16' Sp 2m-6' Z2 ☀

STRAWBERRY

STRAWBERRY HECKER – *Fragaria*

This variety produces fruit from end of June until fall frost (day neutral). Large fruit with excellent flavour.

Ht 15cm-6" Sp 30cm-12" Z3 ☀

STRAWBERRY FT. LARAMIE – *Fragaria*

An ever-bearing variety producing two heavy crops per year. First at the end of June followed by the second in September. An older variety with firm, bright scarlet-red berries.

Ht 15cm-6" Sp 30cm-12" Z3 ☀

STRAWBERRY TRISTAR – *Fragaria*

This variety produces fruit from end of June until fall frost (day neutral). Medium, very firm fruit. Very good for eating fresh and freezing.

Ht 15cm-6" Sp 30cm-12" Z3 ☀

SMALL FRUIT PRICING

Blueberry / Saskatoon / Cherry
Grape / Currant / Gooseberry
Haskap

1 gal - \$22.25

3 gal - \$60.50

2 gal - \$42.50

5 gal - \$80.50

Small Fruit



Martin Saskatoon



Fort Laramie Strawberries



Cherry Valentine



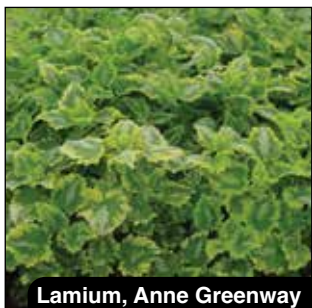
Raspberries

Vines



Clematis Jackmanii

Perennials & Roses



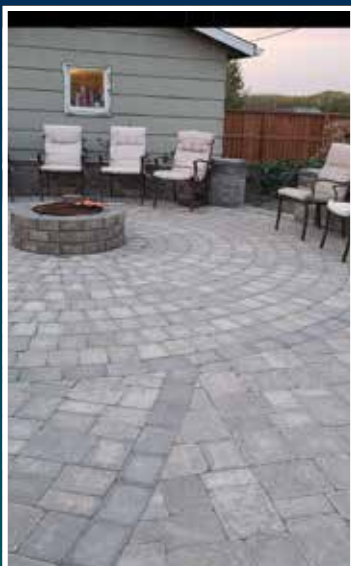
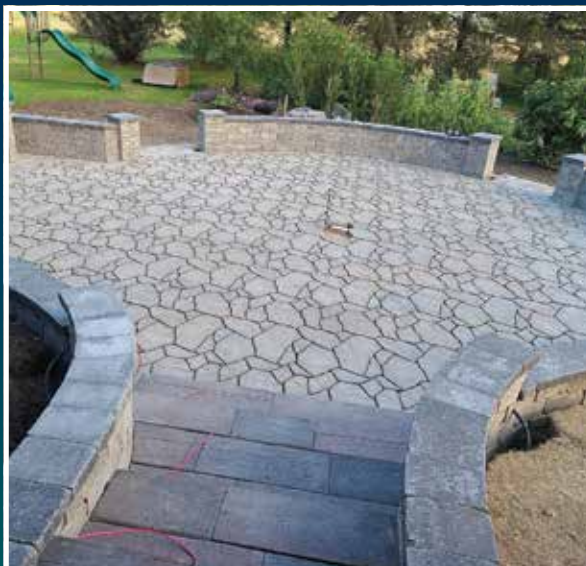
Lamium, Anne Greenway



Lilium Stargazer Lily



Never Alone Rose



To _____
